

CHAPS

Description: Nubuck with Scotchguard applied for water repellancy.

Hide Origin: European

Average Size: 50 sqft

Dye Method: Semi-aniline nubuck

Grain: Natural grain

Available Colours:*

Olive

Physical Analysis:

Property	Test Method	Requirement
Thickness	ISO 2589	0,8 - 1,0 mm
Tensile Strength	ISO 3376	≥ 12 N/mm ₂
Elongation at Break	ISO 3376	40 - 70 %
Tear Strength	ISO 3377-1	≥ 20 N
Flexing Endurance (after 20000 flex)	ISO 5402	No Damage
Colour Fastness to Artificial Light (Xenotest 72 Hrs.)	ISO 105 B 02	3 blue scale
Colour Fastness to Rubbing (500 Dry Rubs, 80 Wet Rubs)	ISO 11640, ISO 11640	3 grey scale, 3 grey scale

Chemical Analysis:

Property	Test Method	Requirement
Chrome Contents, As Cr ₂ O ₃	IUC 8	> 3,5 %
Solubility in Dichloromethane (Fats and other solvents)	ISO 4048	< 9 %
PH of Aqueous Extracts	ISO 4045	≥ 3,5

* Please note that colour and grain are for reference only and what you see on your monitor, or when printed, may vary from actual leather samples. For exact colour matching, please request a leather sample.



HIMALAYA

Description: Heavy grain article with a pulled transparency.

Hide Origin: North American

Average size: 45 - 55 sqft

Dye Method: Pigmented

Grain: Corrected - Dollaro embossed

Available Colours:*

Chocolate

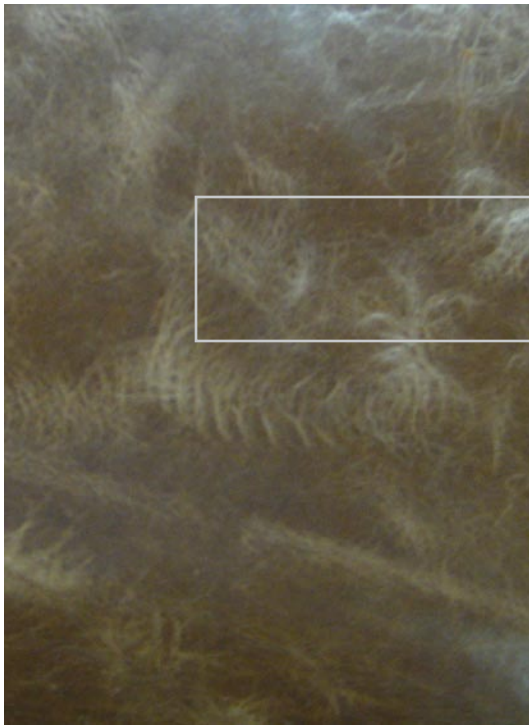
Physical Analysis:

Property	Test Method	Requirement
Thickness	ISO 2589	1,3 - 1,5 mm
Tensile Strength	ISO 3376	≥ 10 N/mm ₂
Elongation at Break	ISO 3376	40 - 70 %
Tear Strength	ISO 3377-1	≥ 20 N
Flexing Endurance (after 20000 flex)	ISO 5402	No damage
Colour Fastness to Artificial Light (Xenotest 72 Hrs.)	ISO 105 B 02	≥ 4 blue scale
Colour Fastness to Rubbing (500 Dry Rubs, 80 Wet Rubs)	ISO 11640, ISO 11640	≥ 4 grey scale, ≥ 4 grey scale
Fire Resistance	F.M.V.S.S. 302	Autoextinguishing without flame propagation

Chemical Analysis:

Property	Test Method	Requirement
Chrome Contents, As Cr ₂ O ₃	IUC 8	> 3,5 %
Solubility in Dichloromethane (Fats and other solvents)	ISO 4048	< 9 %
PH of Aqueous Extracts	ISO 4045	≥ 3,5

* Please note that colour and grain are for reference only and what you see on your monitor, or when printed, may vary from actual leather samples. For exact colour matching, please request a leather sample.



LONESTAR

Description: Waxy aniline. Crackle effect.

Hide Origin: South American

Average Size: 45 - 55 sqft

Dye Method: Aniline

Grain: Natural

*Available Colours:**

Apricot Cappucino

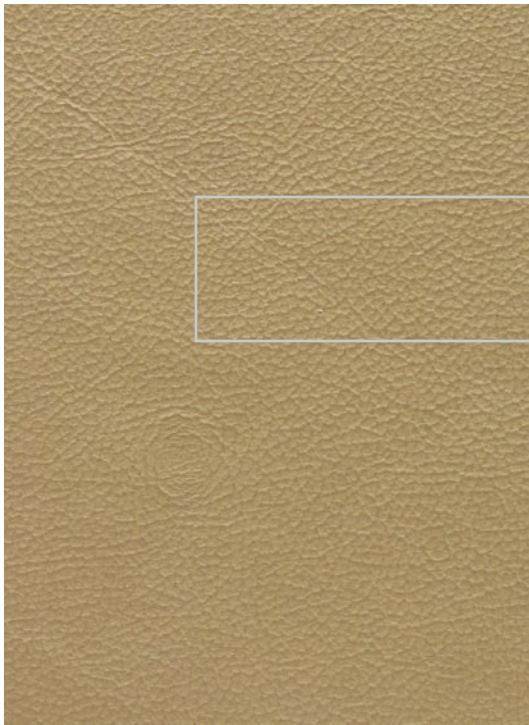
Physical Analysis:

Property	Test Method	Requirement
Thickness	ISO 2589	1,0 - 1,1 mm
Tensile Strength	ISO 3376	≥ 10 N/mm ₂
Elongation at Break	ISO 3376	40 - 70 %
Tear Strength	ISO 3377-1	≥ 15 N
Flexing Endurance (after 20000 flex)	ISO 5402	Not requested
Colour Fastness to Artificial Light (Xenotest 72 Hrs.)	ISO 105 B 02	≥ 2 blue scale
Colour Fastness to Rubbing (500 Dry Rubs, 80 Wet Rubs)	ISO 11640, ISO 11640	≥ 3 grey scale, ≥ 3 grey scale
Fire Resistance	F.M.V.S.S. 302	Autoextinguishing without flame propagation

Chemical Analysis:

Property	Test Method	Requirement
Chrome Contents, As Cr ₂ O ₃	IUC 8	> 3,5 %
Solubility in Dichloromethane (Fats and other solvents)	ISO 4048	< 9 %
PH of Aqueous Extracts	ISO 4045	≥ 3,5

* Please note that colour and grain are for reference only and what you see on your monitor, or when printed, may vary from actual leather samples. For exact colour matching, please request a leather sample.



MADRAS

Description: Madras is the classic corrected grain leather. The hides are aniline died and then machine buffed to reduce or remove the natural defects or imperfections from the top layer. The surface is treated and pigmented and finally embossed with a Madras (Federica) print to recreate a “grained” appearance. Due to its heavy pigmentation, this type of corrected leather is highly resistant to light, stains and wear. It is also very uniform thus allowing for high yield. At CTL, we’ve taken the extra step to add a ‘greasy’ finish to our Madras to improve its hand and lustre.

Hide Origin: South American

Average Size: 45 - 55 sqft

Dye Method: Pigmented

Grain: Corrected - Madras (Federica) embossed

Vinyl Match: Available for all colours

Available Colours:*

Blush Brown K
Cobblestone K

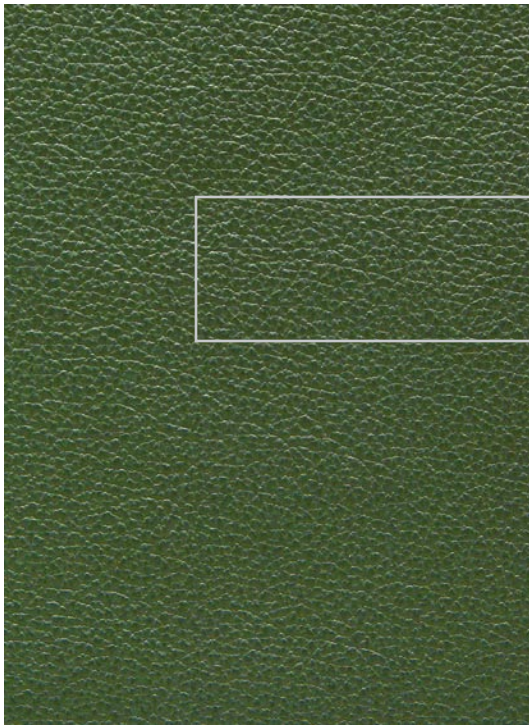
Physical Analysis:

Property	Test Method	Requirement
Thickness	ISO 2589	0,8 - 1,0 mm
Tensile Strength	ISO 3376	≥ 10 N/mm ₂
Elongation at Break	ISO 3376	40 - 70 %
Tear Strength	ISO 3377-1	30 - 40 N
Flexing Endurance	ISO 5402	≥ 50.000 Flex
Colour Fastness to Artificial Light (Xenotest 72 Hrs.)	ISO 105 B 02	4 - 5 (Blue Scale)
Colour Fastness to Rubbing (500 Dry Rubs, 80 Wet Rubs)	ISO 11640 , ISO 11640	4-5 (Grey Scale), 4-5 (Grey Scale)

Chemical Analysis:

Property	Test Method	Requirement
Chrome Contents, As Cr ₂ O ₃	IUC 8	> 3,5 %
Solubility in Dichloromethane (Fats and other solvents)	NRB 11030	< 9 %
PH of Aqueous Extracts	ISO 4045	≥ 3,5

* Please note that colour and grain are for reference only and what you see on your monitor, or when printed, may vary from actual leather samples. For exact colour matching, please request a leather sample.



SAMBA K

Description: Pigmented cow leather for upholstery, federica embossed, water based top finishing. Two-tone effect.

Hide Origin: South American

Average Size: 45 - 55 sqft

Dye Method: Pigmented

Grain: Corrected - Federica embossed

Available Colours:*

Beige K Blue K
 Chocolate K Cognac K
 Green K Rust K
 Taupe K

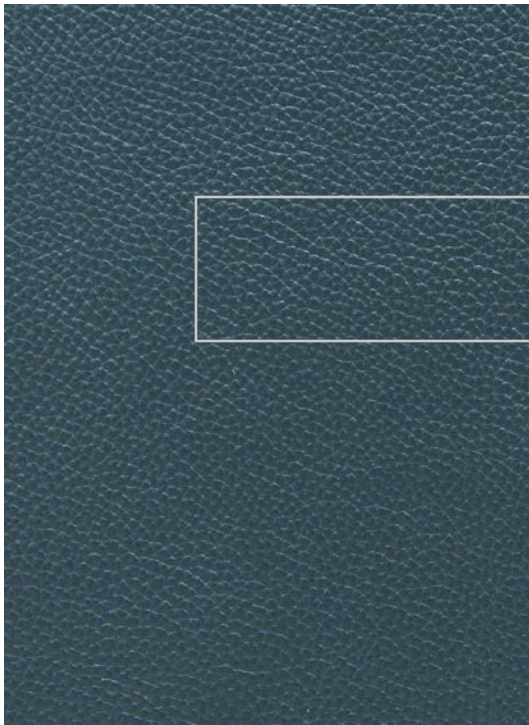
Physical Analysis:

Property	Test Method	Requirement
Thickness	ISO 2589	0,8 - 1,0 mm
Tensile Strength	ISO 3376	≥ 10 N/mm ₂
Elongation at Break	ISO 3376	40 - 70 %
Tear Strength	ISO 3377-1	≥ 30 - 40 N
Flexing Endurance	ISO 5402	≥ 50000 Flex
Colour Fastness to Artificial Light (Xenotest 72 Hrs.)	ISO 105 B 02	4 - 5 (Blue Scale)
Colour Fastness to Rubbing (500 Dry Rubs, 80 Wet Rubs)	ISO 11640, ISO 11640	4-5 (Grey Scale), 4-5 (Grey Scale)

Chemical Analysis:

Property	Test Method	Requirement
Chrome Contents, As Cr ₂ O ₃	IUC 8	> 3,5 %
Solubility in Dichloromethane (Fats and other solvents)	NBR 11030	< 9 %
PH of Aqueous Extracts	ISO 4045	≥ 3,5

* Please note that colour and grain are for reference only and what you see on your monitor, or when printed, may vary from actual leather samples. For exact colour matching, please request a leather sample.



OSLO

Description: Pigmented cow leather for upholstery, Uruguay embossed with greasy finish and water based top finishing.

Hide Origin: South American

Average Size: 45 - 55 sqft

Dye Method: Pigmented

Grain: Corrected - Uruguay embossed

Vinyl Match: Available

Available Colours:*

Navy

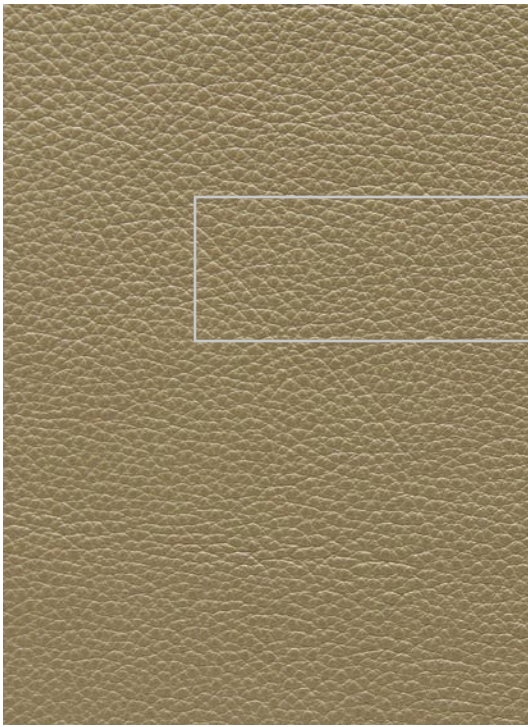
Physical Analysis:

Property	Test Method	Requirement
Thickness	ISO 2589	0,8 - 1,0 mm
Tensile Strength	ISO 3376	≥ 10 N/mm ₂
Elongation at Break	ISO 3376	40 - 70 %
Tear Strength	ISO 3377-1	≥ 20 N
Flexing Endurance (after 20000 flex)	ISO 5402	No Damage
Colour Fastness to Artificial Light (Xenotest 72 Hrs.)	ISO 105 B 02	≥ 4 blue scale
Colour Fastness to Rubbing (500 Dry Rubs, 80 Wet Rubs)	ISO 11640, ISO 11640	≥ 4 grey scale, ≥ 4 grey scale
Fire Resistance (flammability)	BS 5852	Autoextinguishing without flame propagation

Chemical Analysis:

Property	Test Method	Requirement
Chrome Contents, As Cr ₂ O ₃	IUC 8	> 3,5 %
Solubility in Dichloromethane (Fats and other solvents)	ISO 4048	< 9 %
PH of Aqueous Extracts	ISO 4045	≥ 3,5

* Please note that colour and grain are for reference only and what you see on your monitor, or when printed, may vary from actual leather samples. For exact colour matching, please request a leather sample.



PRINCESS D

- Description:* Full Grain. Naturally milling grain with soft hand and silky touch.
- Hide Origin:* European
- Average Size:* 50 - 55 sqft
- Dye Method:* Aniline
- Grain:* Natural grain

*Available Colours:**

- Black
- Cranberry
- Fig

Physical Analysis:

Property	Test Method	Requirement
Thickness	ISO 2589	1,0 - 1,2 mm
Tensile Strength	ISO 3376	≥ 10 N/mm ₂
Elongation at Break	ISO 3376	40 - 75 %
Tear Strength	ISO 3377-1	≥ 20 N
Flexing Endurance (after 20000 flex)	ISO 5402	No Damage
Colour Fastness to Artificial Light (Xenotest 72 Hrs.)	ISO 105 B 02	≥ 4 blue scale
Colour Fastness to Rubbing (50 Dry Rubs, 20 Wet Rubs)	ISO 11640, ISO 11640	≥ 4 grey scale, ≥ 4 grey scale
Fire Resistance	F.M.V.S.S. 302	Self-extinguishing without flame propagation

Chemical Analysis:

Property	Test Method	Requirement
Chrome Contents, As Cr ₂ O ₃	IUC 8	> 3,5 %
Solubility in Dichloromethane (Fats and other solvents)	NBR 11030	< 9 %
PH of Aqueous Extracts	ISO 4045	≥ 3,5

* Please note that colour and grain are for reference only and what you see on your monitor, or when printed, may vary from actual leather samples. For exact colour matching, please request a leather sample.