



CONTRACT & HOSPITALITY LEATHER

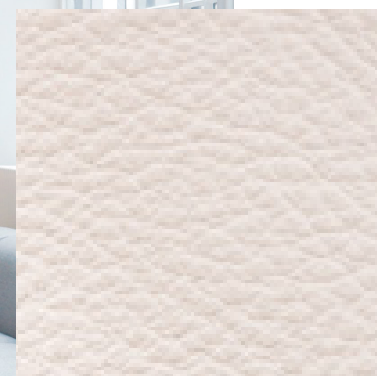


PRESTON

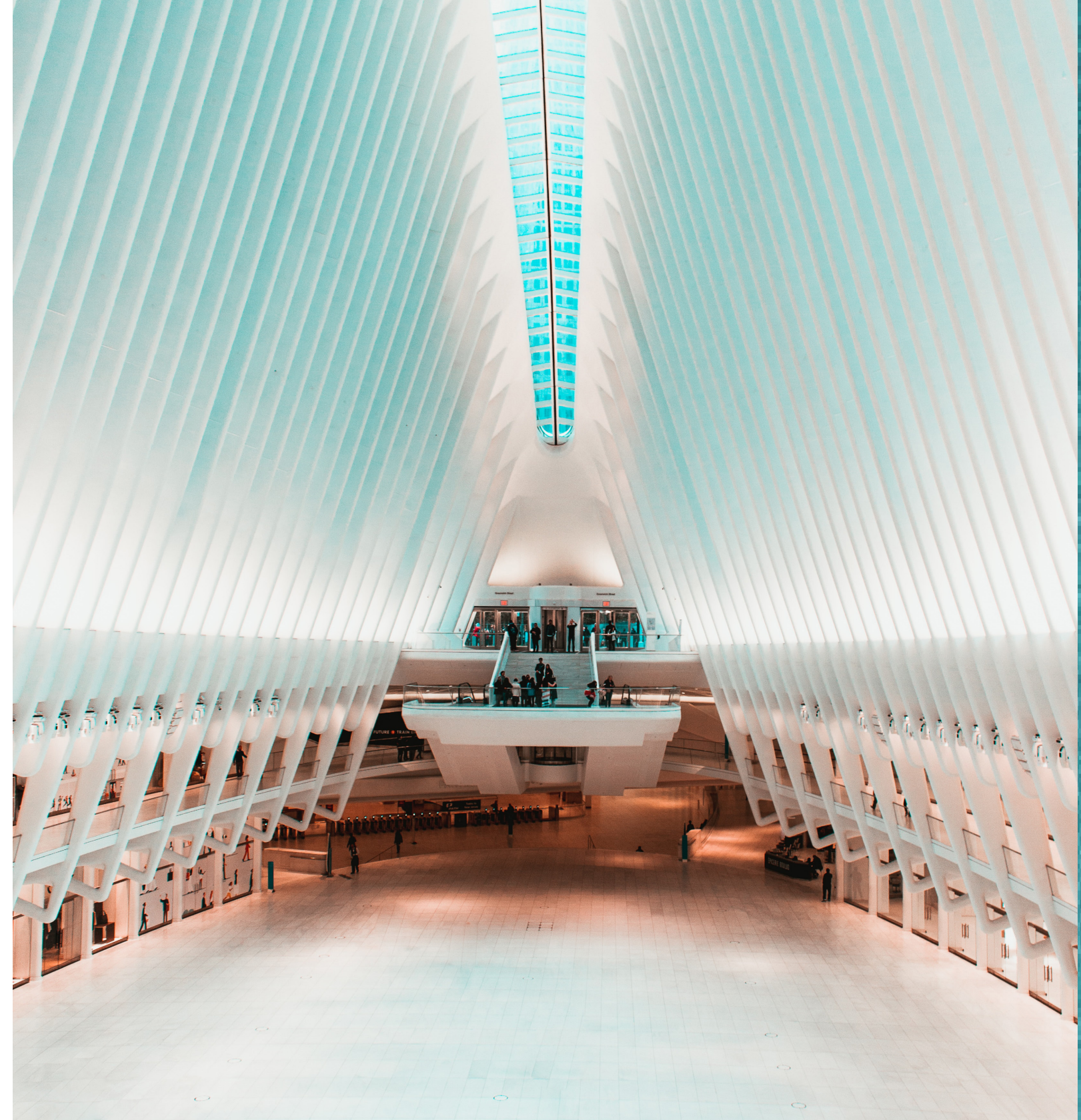
CONTRACT & HOSPITALITY LEATHER



crushed ice



marble



polinesia

blu petrol



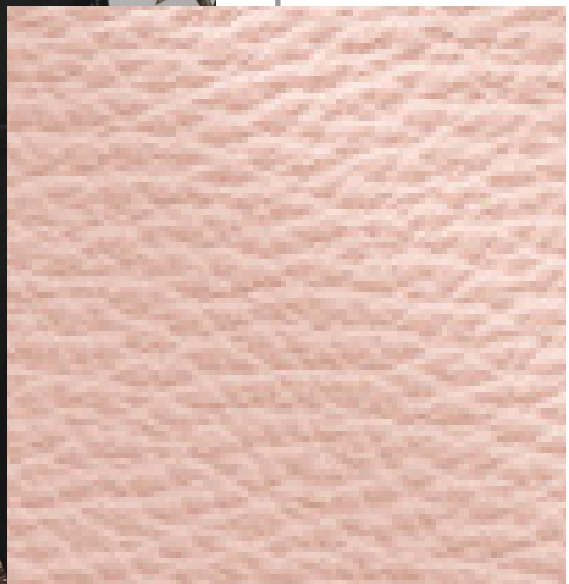
Natural raised grain, a soft sense of elegance, and with a slight waxy touch, Preston is available to choose in 105 colours today!

ebony





cedar green



pill



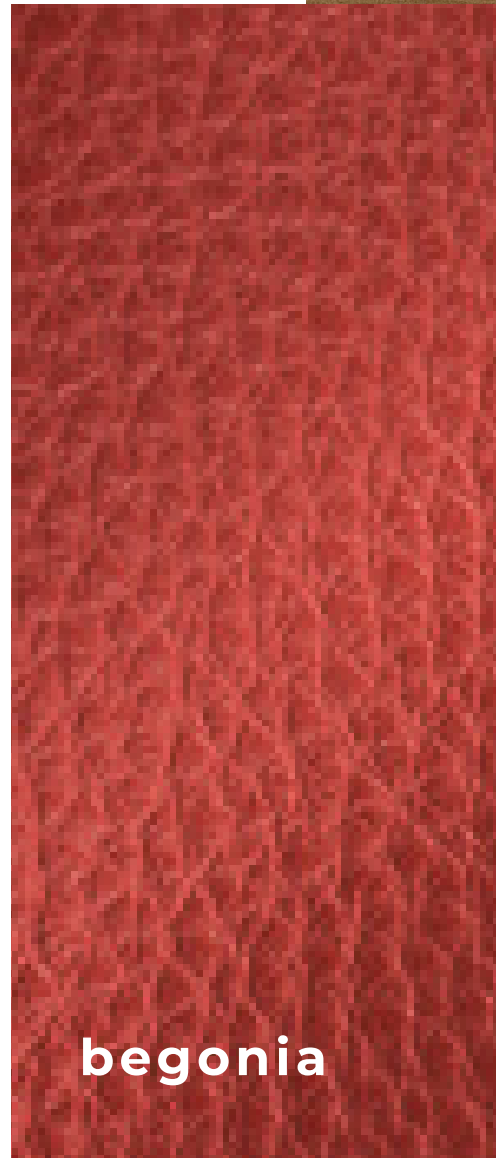
Designed with the demands of today's modern lifestyle recognizing colour and durability in mind.

turquoise

north pole

This leathers performance in high traffic areas ensures ease of cleaning.







energy



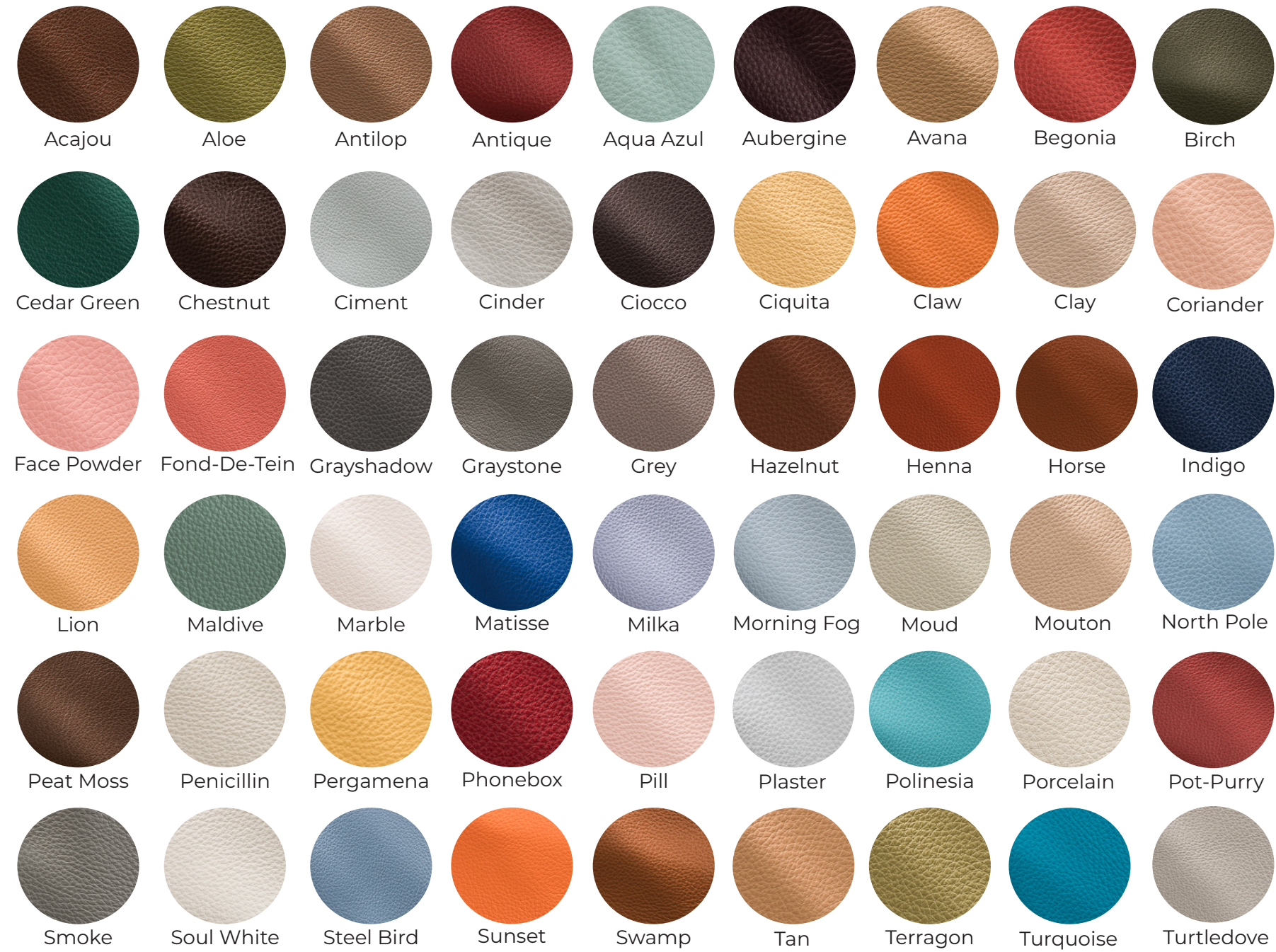
aqua azul



TIMELESS & DYNAMIC

A timeless look, available in an extensive range of dynamic and endless colours.

lime



Content
 Natural Print, Half Grain
Finish
 Solid, Semi Matt
 Finish, Dyed Through,
 Pigmented
Raw Material
 Extra European
Average Hide Size
 50 FT2

NOTE: Due to color variations on different monitors and color printers, before making exact color and texture matches, we recommend that you request an actual sample to ensure proper color representation as many monitors and printers cannot print colors accurately. CTL Leather is not responsible for color selections made from this lookbook.