





SIENA

PRESTIGE LEATHER

miel



nude



basil

A panoramic view of a town on a hillside at sunset. The scene is bathed in a warm, golden-orange light. In the foreground, rolling hills are dotted with cypress trees. The middle ground shows a town built on a hillside, with a prominent church spire and a dome. The background features a large, rounded hill under a hazy sky. A dark rectangular text box is positioned in the upper center of the image.

**SOPHISTICATED
& SMOOTH**

marzipan

bombay

plume

eggplant



titanium

marzipan



nutmeg



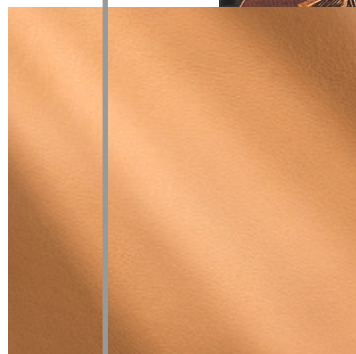
blue moon



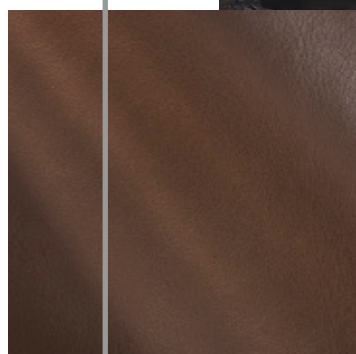
nude

Silky to the touch, Siena is distinguished by its soft and supple surface that begs to be touched.

miel



date



A true artisans way to make leather, this vivid line can be used for many applications from handbags to residential needs.

SIENA COLLECTION

mocha



SOFT & SUPPLE
SURFACE

PROPERTIES

Property	Test Method	Result
Average Thickness	ISO 2589	0.9 - 1.1mm
Tensile Strength	ISO 3376	<6
Elongation at Break	ISO 3376	Min 40% - Max 70%
Tear Strength	ISO 3377	>40 N/mm
Flexing Endurance (after 20,000 cycles)	ISO 5402	No Damage
Colour Fastness to Artificial Light (Xenotest 72hrs)	ISO 105 B 02	4 (Blue Scale)
Colour Fastness to Rubbing (100 Dry Rubs, 50 Wet Rubs)	ISO 11640	4, 4 (Grey Scale)
Finishing Adhesion	EN ISO 11644	> 3
Determination of pH	EN ISO 4050	OK - Min 3, se pH <4, pH <0.7
Ignitability BS 5852-1 (Cigarette)	BS 5852:1 EN 1021:1	Pass
Ignitability BS 5852-2 (Match)	BS 5852:2 EN 1021:2	Pass
California Technical Bulletin 117	Cal Tech Bulletin 117-2013	Class 1
Wyzenbeek (Oscillatory Cylinder Method at 100,000 cycles)	ASTM D 4157.13	Pass

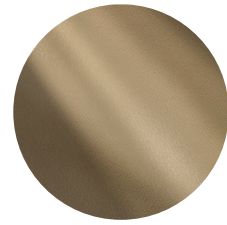
S I L K Y

T O

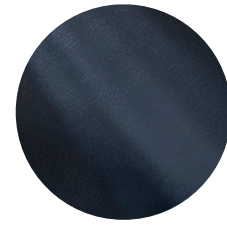
T H E

T O U C H

bombay



Basil



Blue
Moon



Bombay



Carbon



Castle



Cerise



Date



Eggplant



Fudge



Glacier



Marsala



Marzipan



Miel



Mocha



Nude



Nutmeg



Oyster



Plume



Thyme



Titanium

Content
Full Grain, Aniline

Finish
Aniline, Matt, Smooth

Raw Material
European

Average Hide Size
50 FT2

NOTE: Due to color variations on different monitors and color printers, before making exact color and texture matches, we recommend that you request an actual sample to ensure proper color representation as many monitors and printers cannot print colors accurately. CTL Leather is not responsible for color selections made from this lookbook.