



---

# STAGECOACH

---

**PRESTIGE LEATHER**



# STAGECOACH

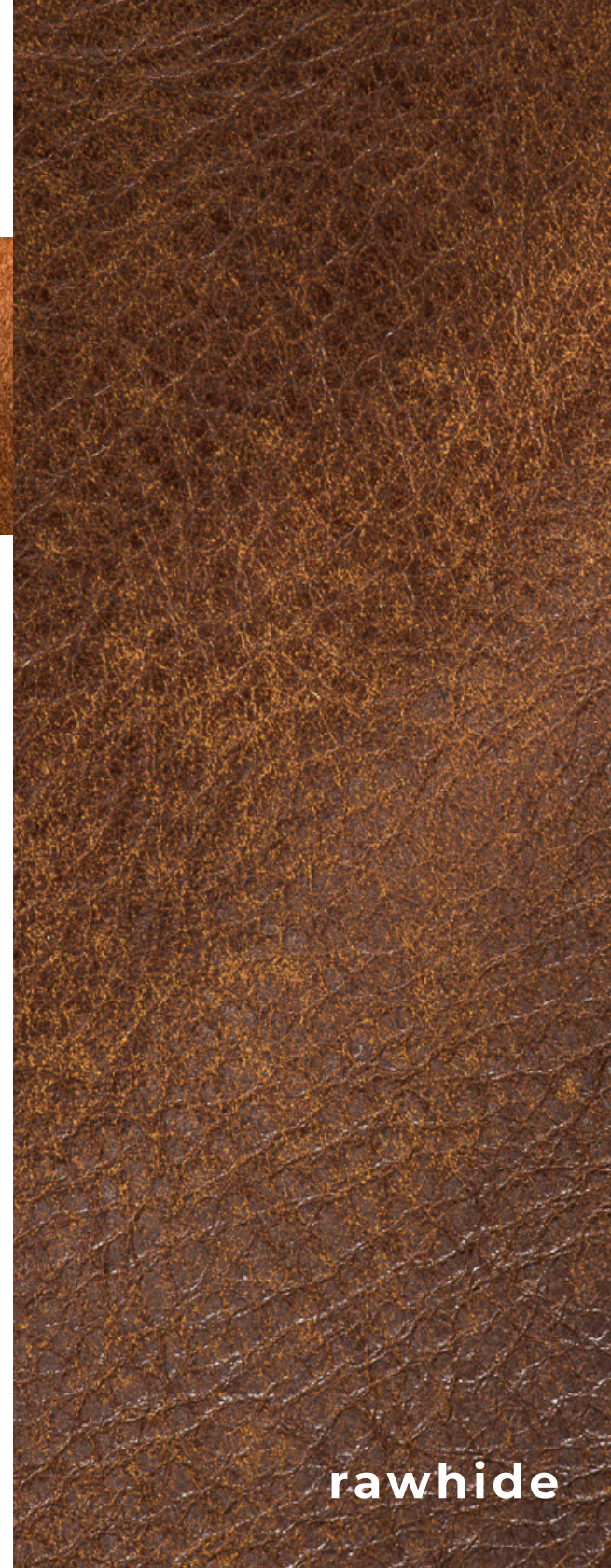
**PRESTIGE LEATHER**



**hickory**



**red rocks**



**rawhide**





UNIQUE  
& TIMELESS

midnight  
blue

stonewash



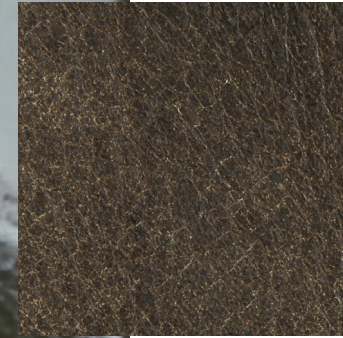
bark

branch

timber



**hickory**

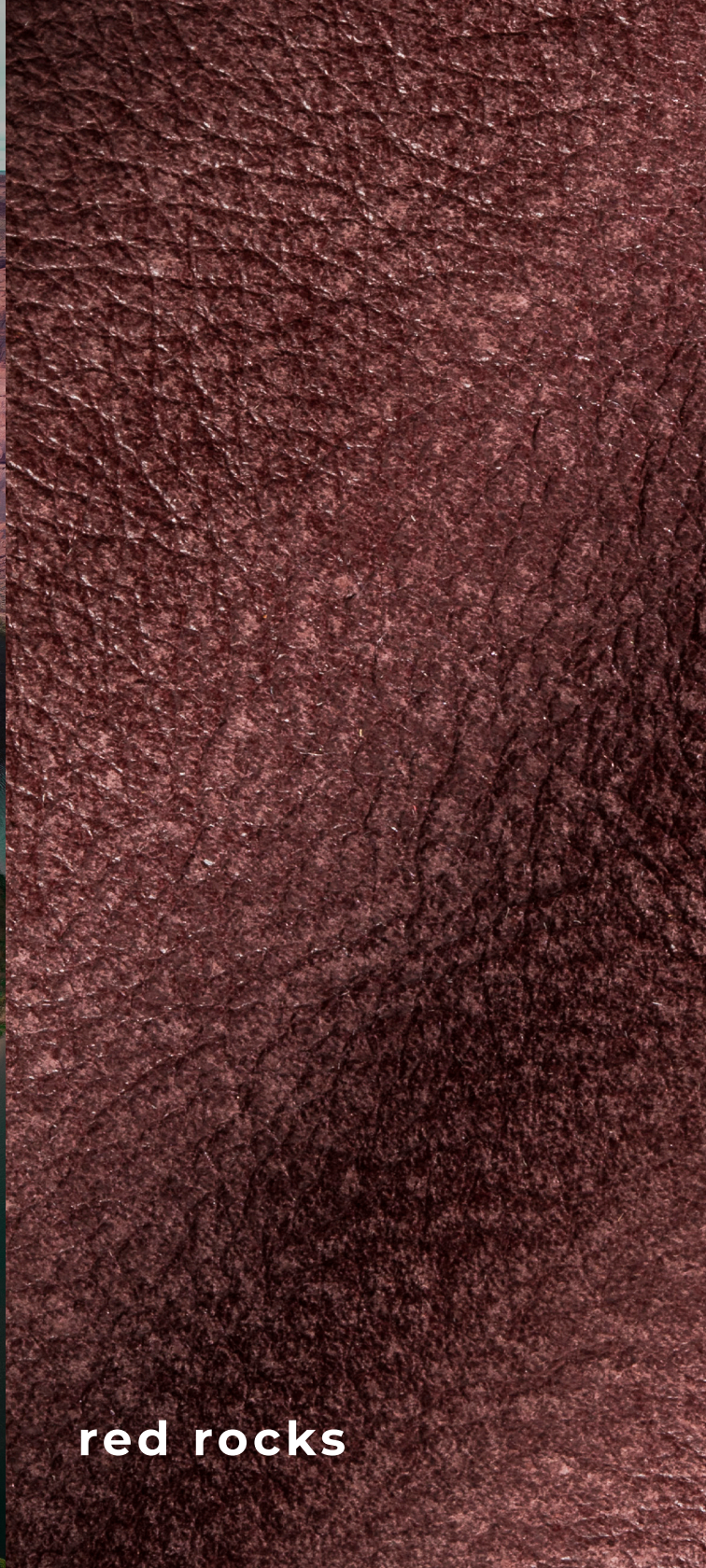


**black moss**

Produced on European hides, Stagecoach is a natural grain leather that has been aniline dyed and hand buffed to achieve the unique vintage look.

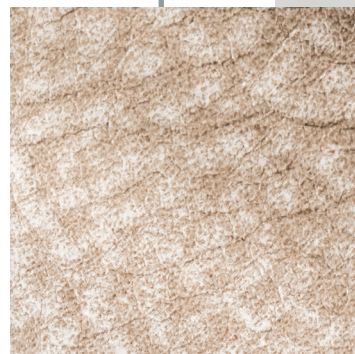


red rocks

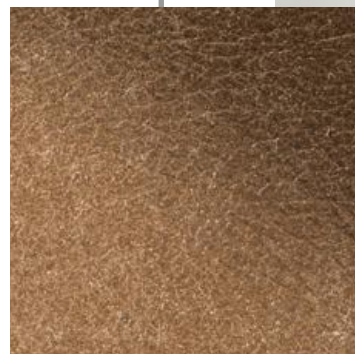


timber

**stonewash**



**birch**



**STAGECOACH** COLLECTION

Ideal for club chairs and a rustic  
look without compromising a  
very soft and natural hand.

rawhide



STAGECOACH COLLECTION



**DURABLE &  
EVERLASTING**

STAGECOACH COLLECTION

branch



Bark



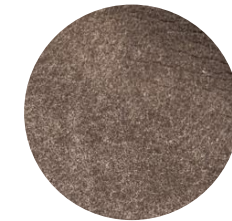
Birch



Black Moss



Branch



Fossil



Hickory



Midnight  
Blue



Moonstone



Rawhide



Red Rocks



Stonewash



Timber

---

**Content**

Top Grain, Natural Grain,  
Snuffed

**Finish**

Aniline, Semi Matt,  
Smooth

**Raw Material**

European

**Average Hide Size**

50 FT2

*NOTE: Due to color variations on different monitors and color printers, before making exact color and texture matches, we recommend that you request an actual sample to ensure proper color representation as many monitors and printers cannot print colors accurately. CTL Leather is not responsible for color selections made from this lookbook.*