



# DUBLIN

**ESSENTIAL LEATHER**





# DUBLIN

**ESSENTIAL LEATHER**



cashew



dark brown

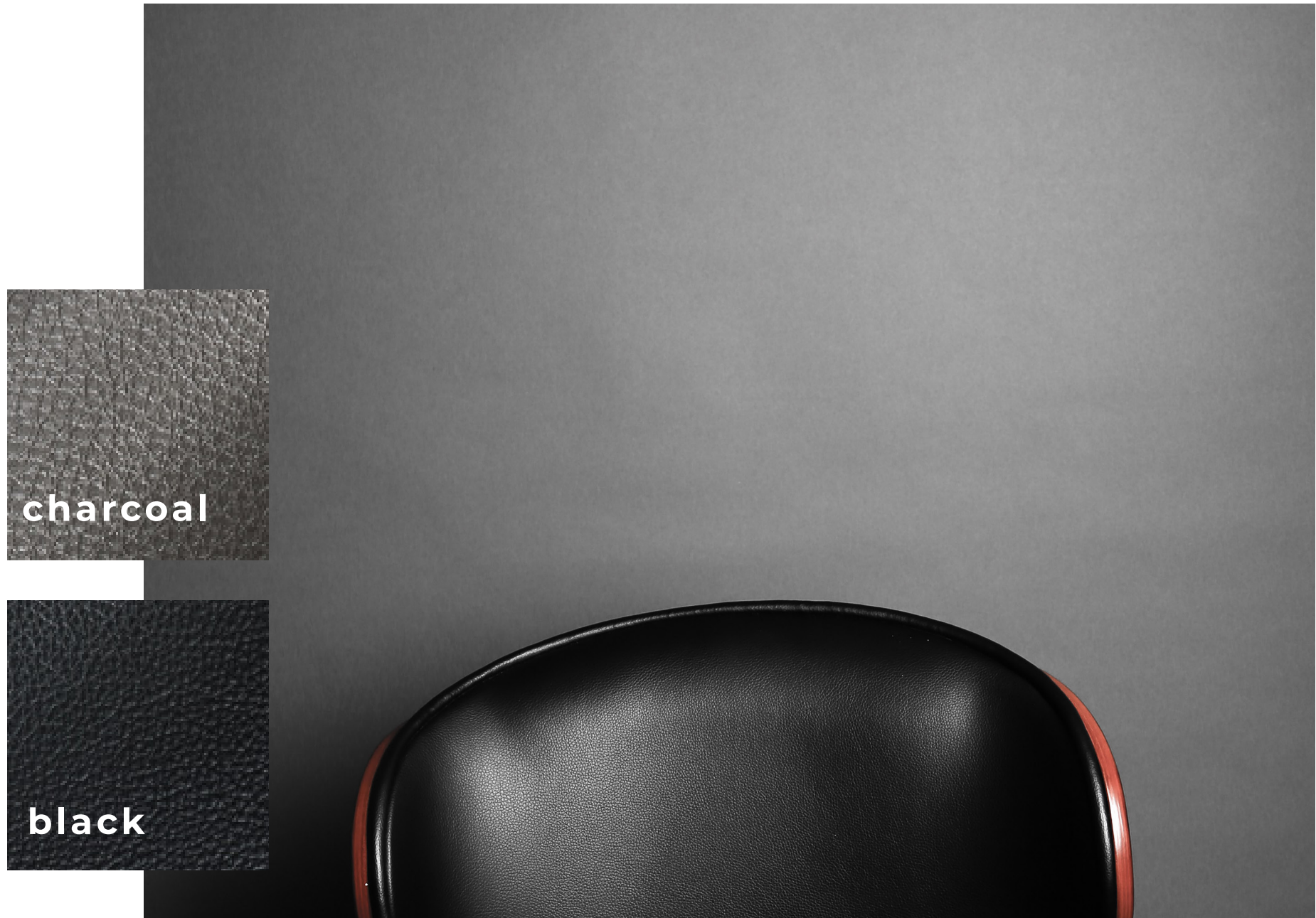


mist



marine

This fluffy and light natural grained leather is achieved by a special milling process that allows the grain to surface naturally, providing the leather with a soft, supple hand and natural pebbled texture.



charcoal

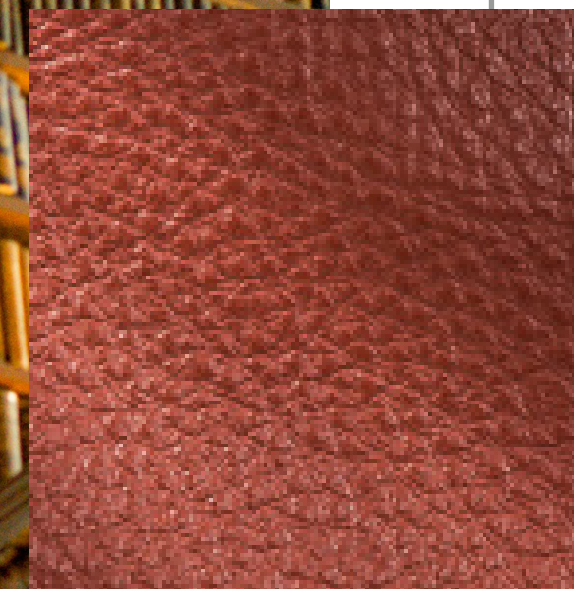
black



Our most popular heavyweight leather exhibits a grain that has been slightly tipped with a sheen to give the leather true radiance.



english saddle



**brandy**

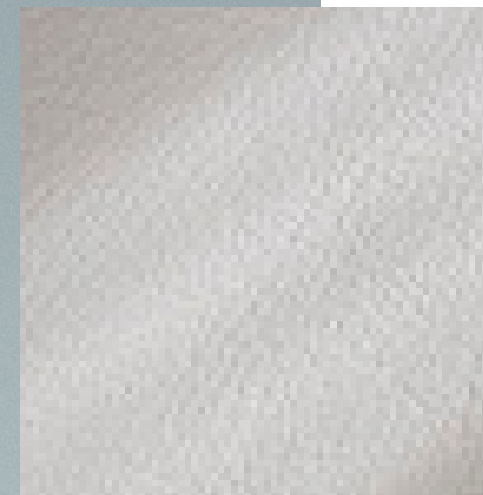


**buckskin**

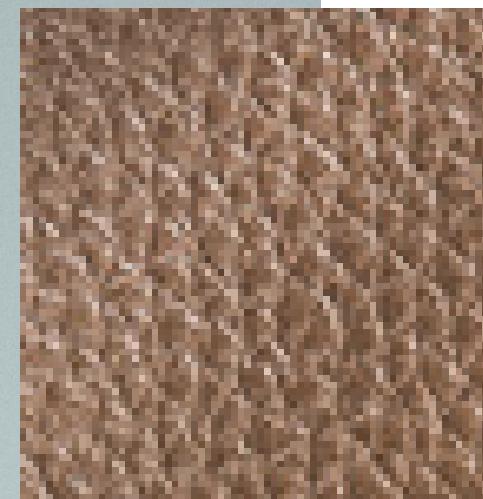
# RADIANT & DYNAMIC



A fine transparent finish further protects the leather and allows for depth and variation of color. A true aficionado's leather.



**mist**



**taupe**





papaya



pesto



DUBLIN COLLECTION



caribbean





limone



**Content**  
Natural Print, Half Grain

**Finish**  
Solid, Semi Matt  
Finish, Dyed Through,  
Pigmented

**Raw Material**  
Extra European

**Average Hide Size**  
50 FT2

*NOTE: Due to color variations on different monitors and color printers, before making exact color and texture matches, we recommend that you request an actual sample to ensure proper color representation as many monitors and printers cannot print colors accurately. CTL Leather is not responsible for color selections made from this lookbook.*