



MUSTANG

VINTAGE LEATHER



MUSTANG

VINTAGE LEATHER

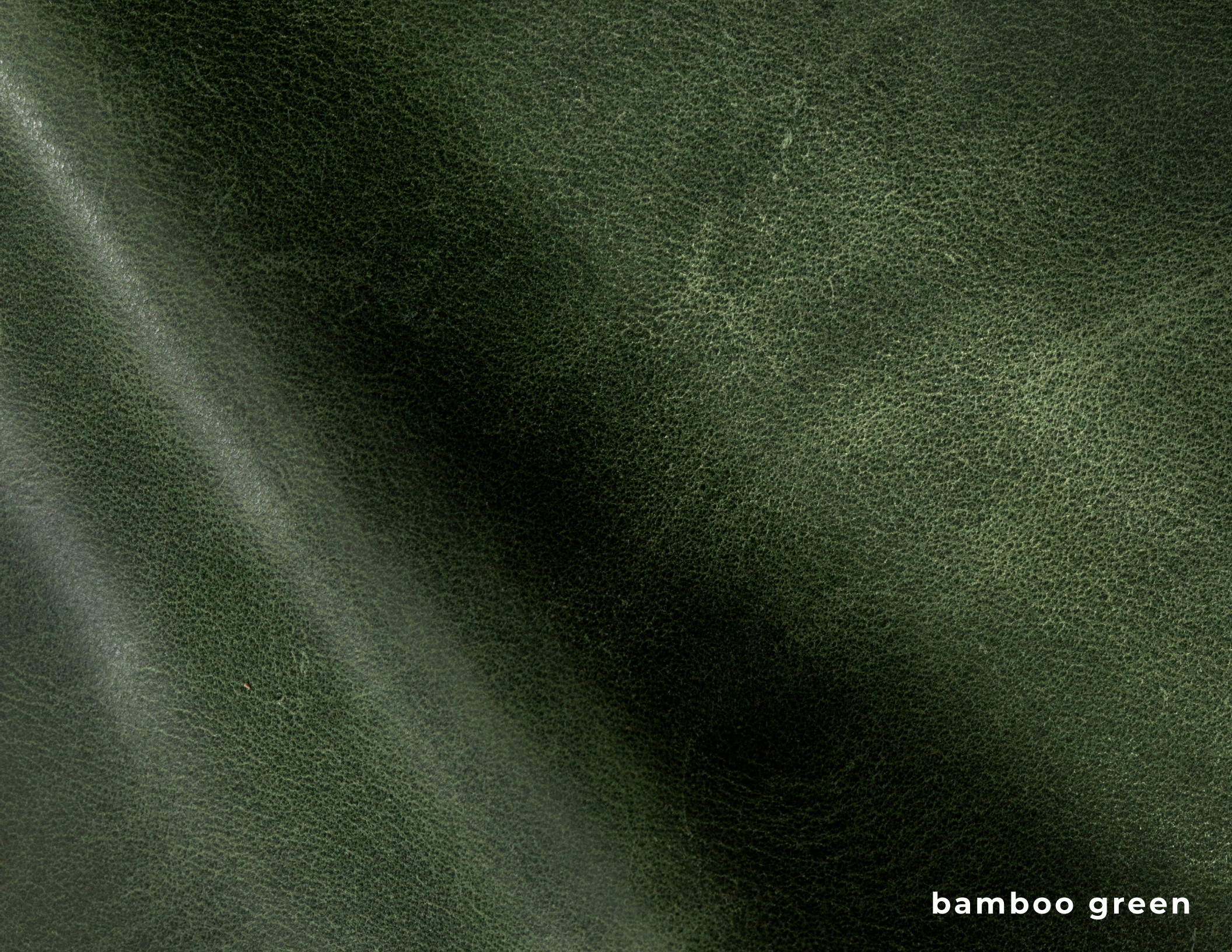


liver chestnut

flaxen chestnut

Inspired by the riches of the earth, this full-bodied leather has a soft wax finish that exudes sophisticated elegance.

biscuit



bamboo green

Available in an exquisite palette of cool neutrals and rich earth tones, this is a classic leather that will upholster beautifully and develop a rich patina with time and with age.

dapple grey



seal brown



russett

SOPHISTICATION & ELEGANCE

Crafted from the finest selection of European hides, the leather is milled ever so gently to offer a subtle break that highlights the natural tones in its smooth matt finish that will be enhanced over time.

grey
ghost

mustang
red



red roan





Durable with a dense structure and intense depth, it is ideal for the perfect handbag to a truly classic club chair.



storm

MUSTANG COLLECTION

racing red



bronco brown

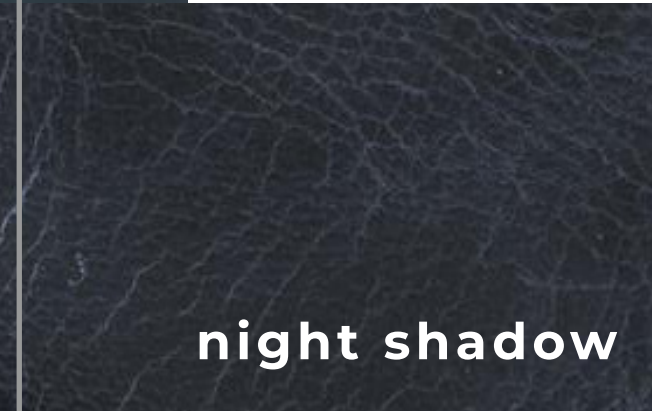
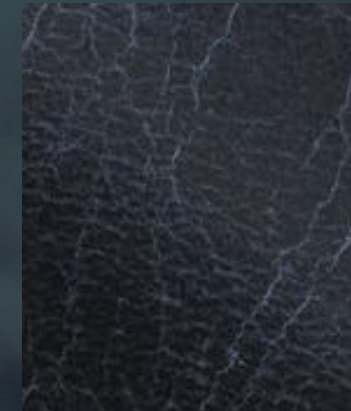


sand dollar

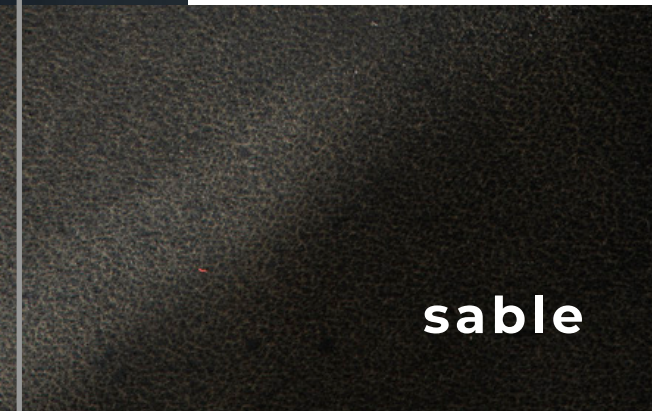
T I M E L E S S

L O O K A N D

F E E L



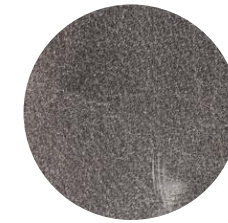
night shadow



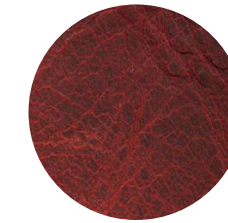
sable



Biscuit



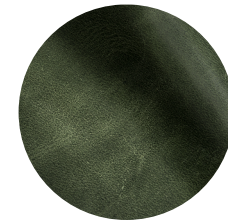
Grey Ghost



Racing Red



Sable



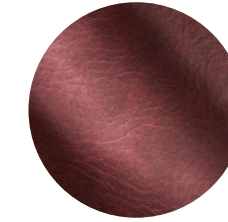
Bamboo Green



Dapple Grey



Liver Chestnut



Red Dun



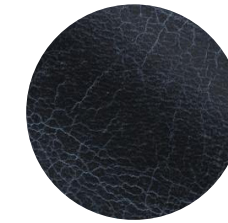
Seal Brown



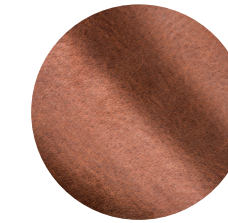
Sandy Bay



Flaxen Chestnut



Night Shadow



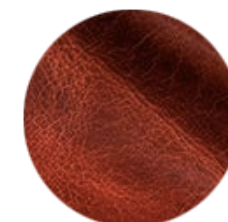
Russet



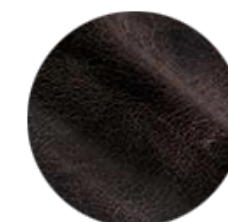
Storm



Red Roan



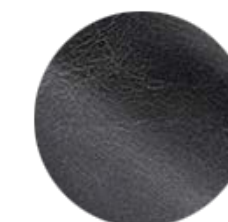
Blazing Flame



Bronco Brown



Sand Dollar



Silver Cloud

Content
Full Grain, Aniline

Finish
Solid, Wax Pull Up

Raw Material
European

Average Hide Size
50 FT²

NOTE: Due to color variations on different monitors and color printers, before making exact color and texture matches, we recommend that you request an actual sample to ensure proper color representation as many monitors and printers cannot print colors accurately. CTL Leather is not responsible for color selections made from this lookbook.