



CTL LEATHER INC

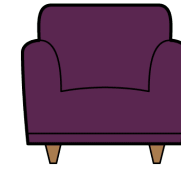
CTL Leather Calculate Needs

CALCULATE NEEDS

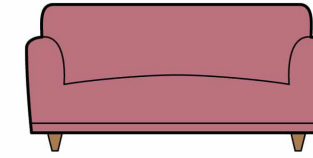
Please consult the manufacturer or upholsterer to determine whether more leather is required due to the different quality/aspects of a hide. A corrected hide vrs an natural aniline hide, will consume different leather needs/FT2, due to the variant aspects of the hide.

It is also important to discuss what a customer's expectation are with respects to what natural markings will be cut and seen within a piece, this consideration should be discussed.

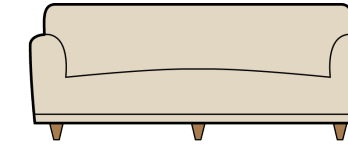
By industry standards, one running yard of fabric is equal to 18 square feet (sqft) of leather. While there is actually 13.5 sqft of leather in a 54" wide running yard, the additional 4.5 sqft accounts for the waste factor with leather due to the irregular shape of leather hides. The enclosed chart is a helpful tool for estimate leather requirements by the square foot. The values detailed are estimates, and requirements should always be verified for each application with your upholsterer or installer.



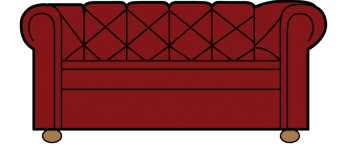
Lounge Chair, tight Seat & Back
(8 yrds. / 144 s.f.)



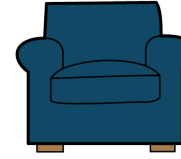
Loveseat, Tight Seat & Black
(12 yrds. / 216 s.f.)



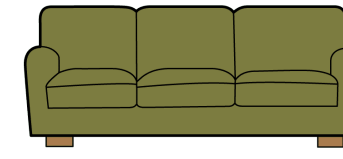
Sofa, Tight Seat & Black
(15 yrds. / 270 s.f.)



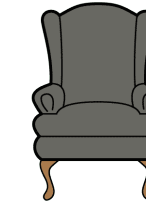
Tufted Loveseat, 72"
(13 yrds. / 234 s.f.)



Lounge Chair (Loose Seat & Back)
(9 yrds. / 162 s.f.)



Sofa (Loose Seat & Back)
(18 yrds. / 324 s.f.)



Wing Chair
(8 yrds. / 144 s.f.)



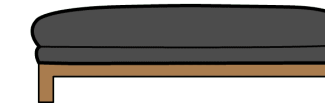
Bergere
(3 yrds. / 54 s.f.)



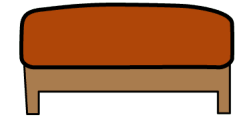
Arm Chair
(2 yrds. / 36 s.f.)



Bar Stool
(2 yrds. / 36 s.f.)



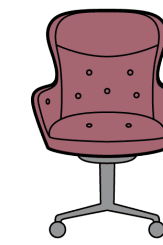
Bench 60"
(2 yrds. / 36 s.f.)



Ottoman, 36" X 36"
(5 yrds. / 90 s.f.)



Desk Chair
(3 yrds. / 54 s.f.)



High Back Executive Chair
(5 yrds. / 90 s.f.)