



# BULL

**CLASSIC LEATHER**



# BULL

**CLASSIC LEATHER**



**cashew**



**dune**



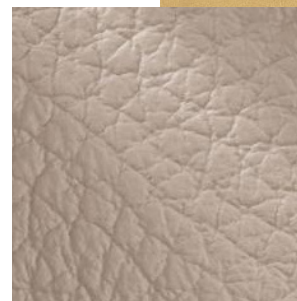
This top grain printed leather offers depth, texture, slight sheen, for every day use.



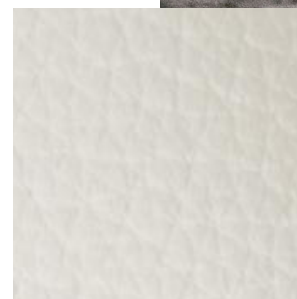
**senpe**



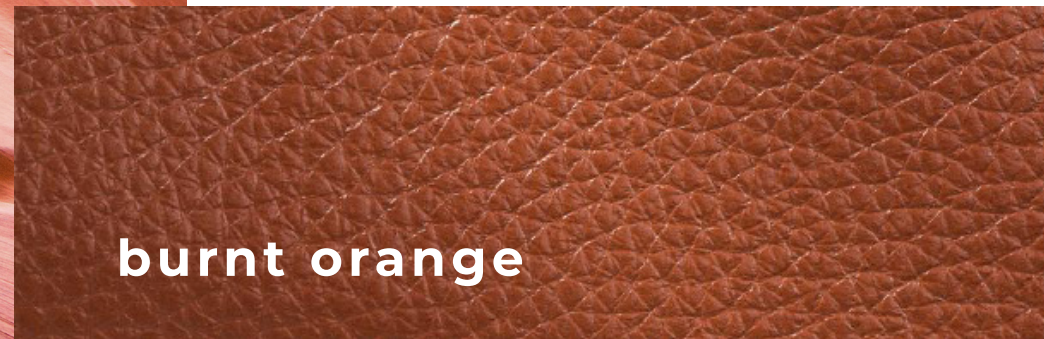
**stone**



**champagne**



**burnt orange**



**rouge**



**mauve**







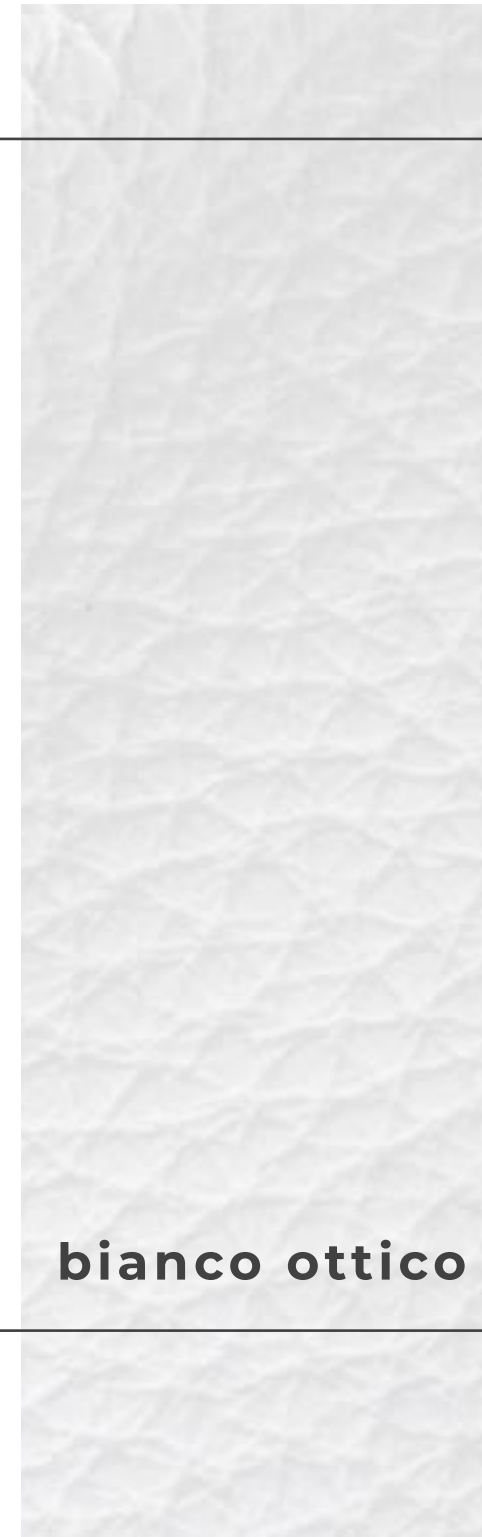
**rhubarb**



**antracite**



**bianco ottico**







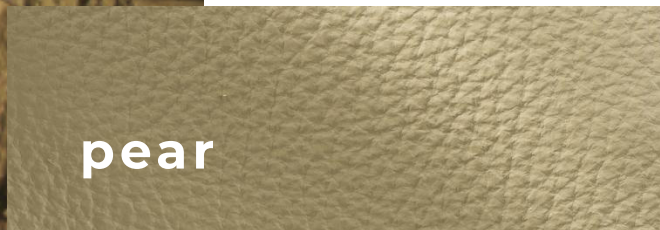
almond



sterling



mastice



pear



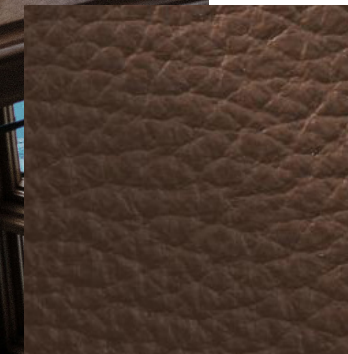
Finally, a protective topcoat and two tone effect, gives the hides a resistant yet brilliant finish.



**frost**



**hazelnut**

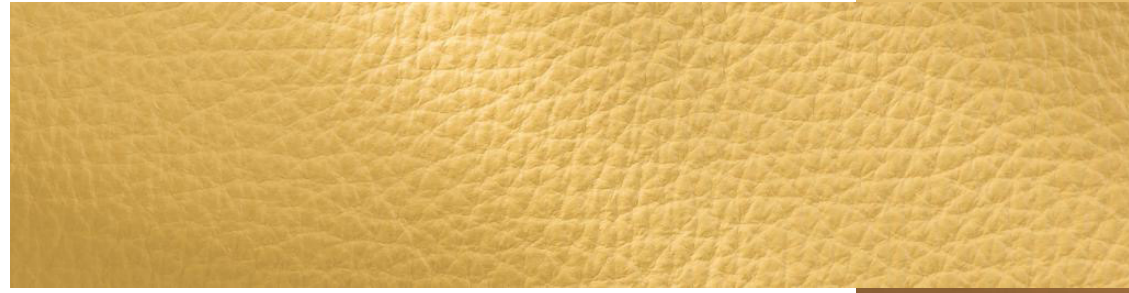


**marrone**





**citron**



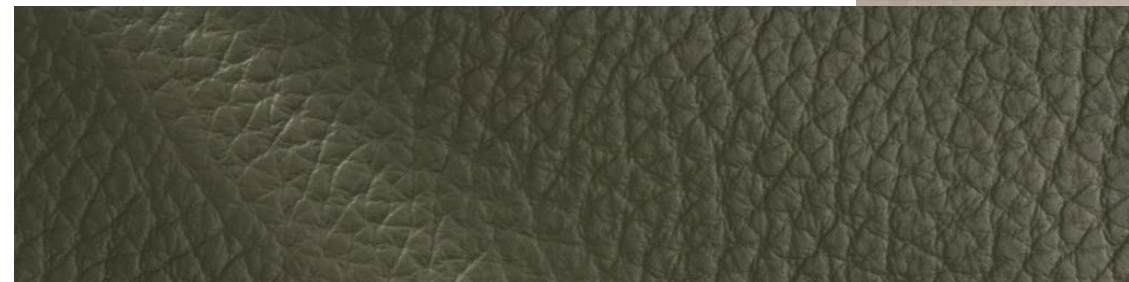
**dune**



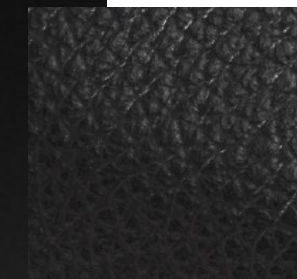
**stone**



**musk**



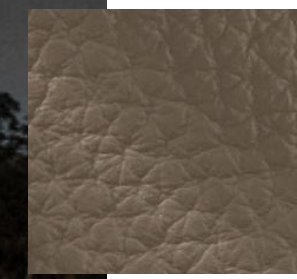




**black**

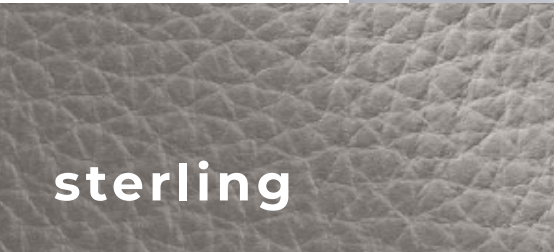


**marrone**

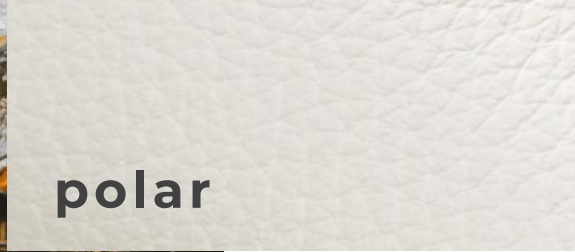


**mastice**

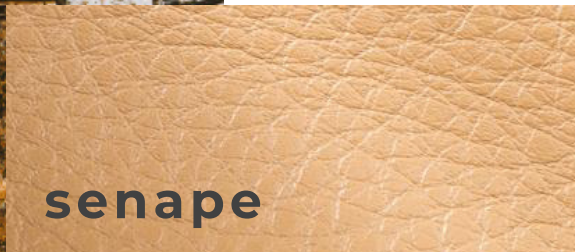




sterling



polar

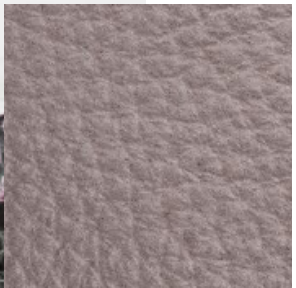


senape

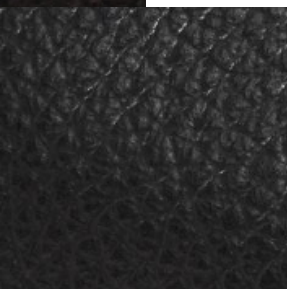
**IRRESISTIBLE  
FINISH**



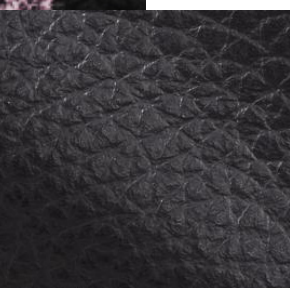
polar



lilac

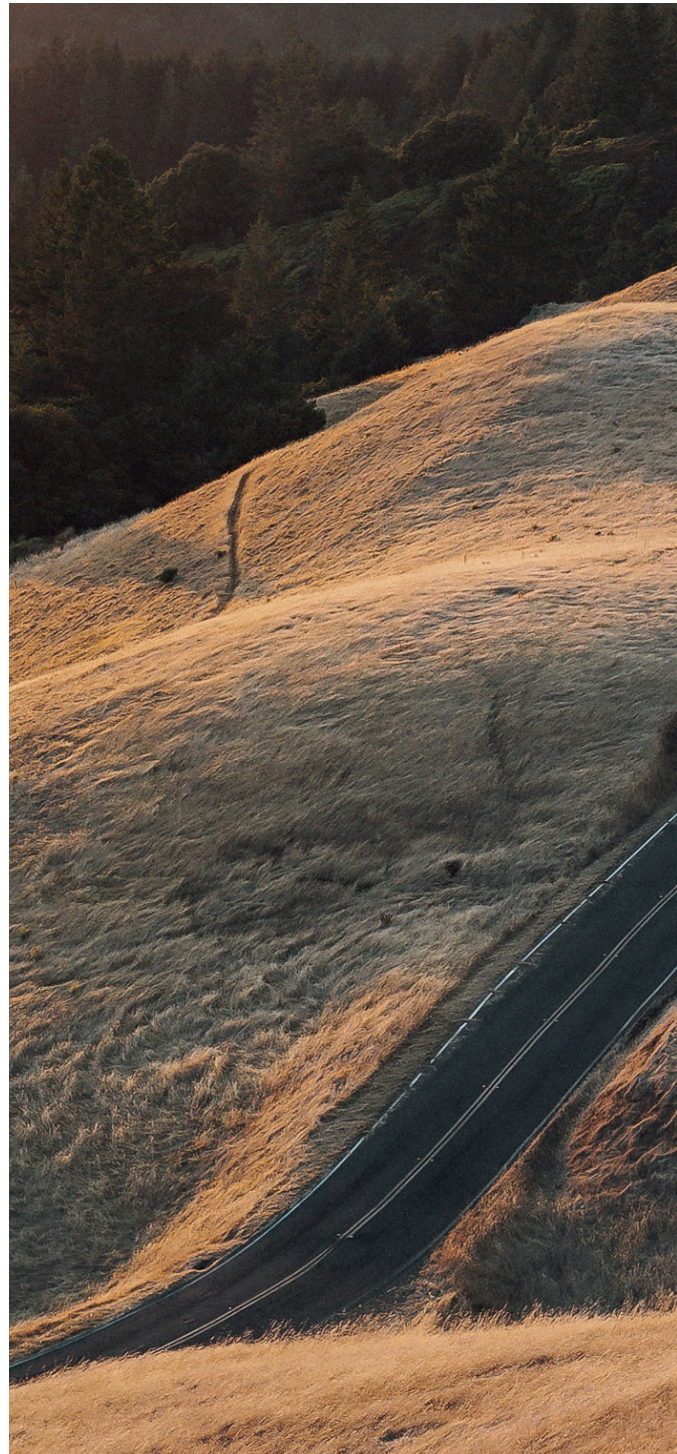
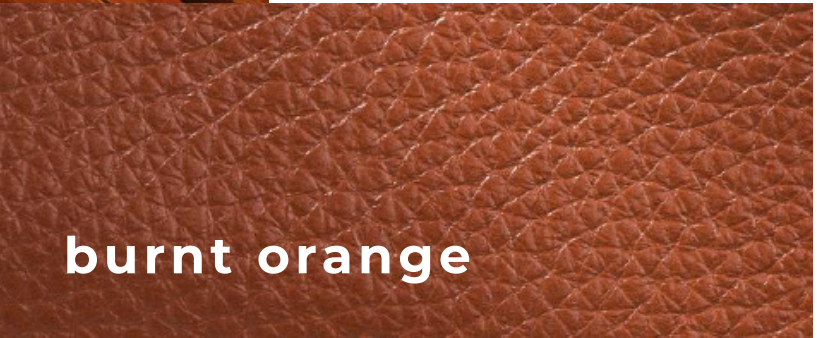


smoke



aubergine







tortora

creme

cocoa

RUSTIC  
WARMTH

BULL COLLECTION







Almond



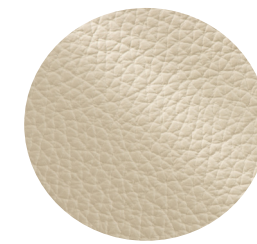
Auburn



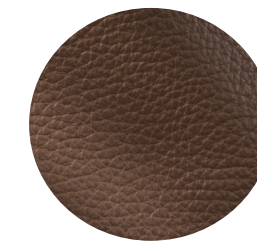
Black



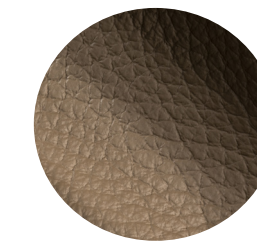
Champagne



Creme



Hazelnut



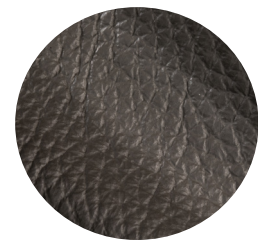
Mastice



Pear



Smoke



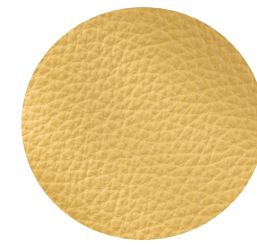
Antracite



Bianco  
Ottico



Burnt  
Orange



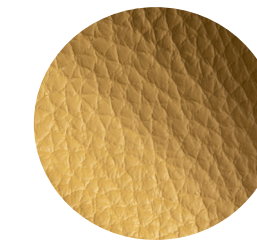
Citron



Rouge



Lilac



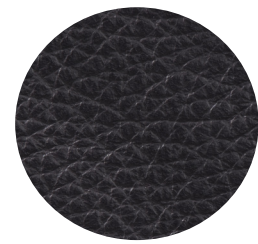
Senepe



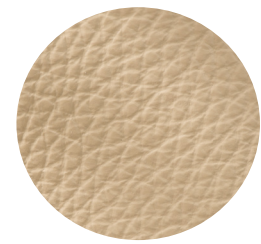
Polar



Sterling



Aubergine



Bisque



Cashew



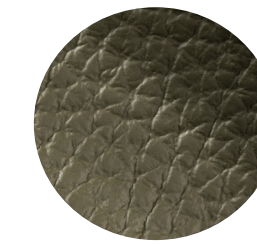
Cocoa



Frost



Marrone



Musk



Rhubarb



Stone

*NOTE: Due to color variations on different monitors and color printers, before making exact color and texture matches, we recommend that you request an actual sample to ensure proper color representation as many monitors and printers cannot print colors accurately. CTL Leather is not responsible for color selections made from this lookbook.*