



DUBLIN

ESSENTIAL LEATHER



DUBLIN

ESSENTIAL LEATHER



cashew



dark brown
(2 tone)

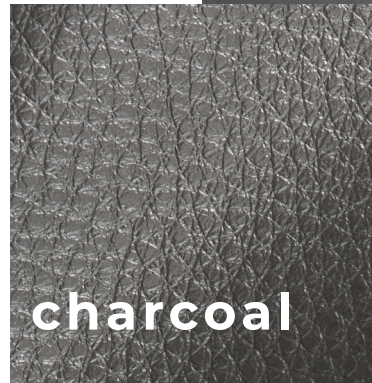


mist



marine

This fluffy and light natural grained leather is achieved by a special milling process that allows the grain to surface naturally, providing the leather with a soft, supple hand and natural pebbled texture.



charcoal



black



Our most popular heavyweight leather exhibits a grain that has been slightly tipped with a sheen to give the leather true radiance.



english saddle



**brandy
(2 tone)**

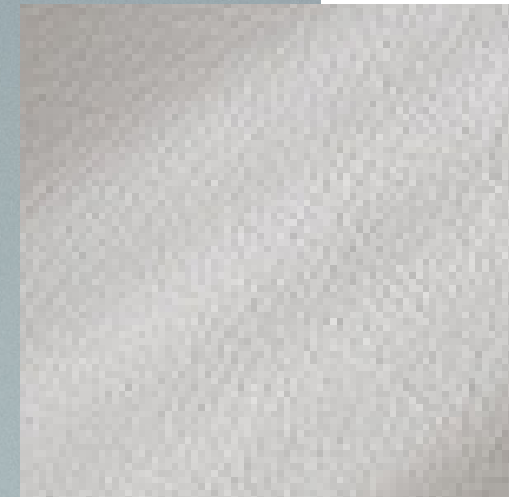


buckskin

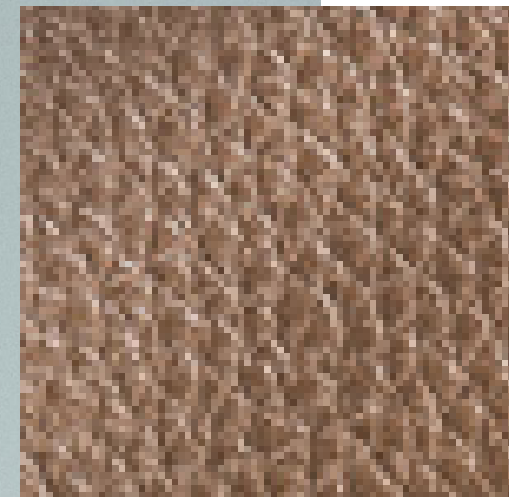
RADIANT & DYNAMIC



A fine transparent finish further protects the leather and allows for depth and variation of color. A true aficionado's leather.



mist



**taupe
(2 tone)**



papaya



pesto



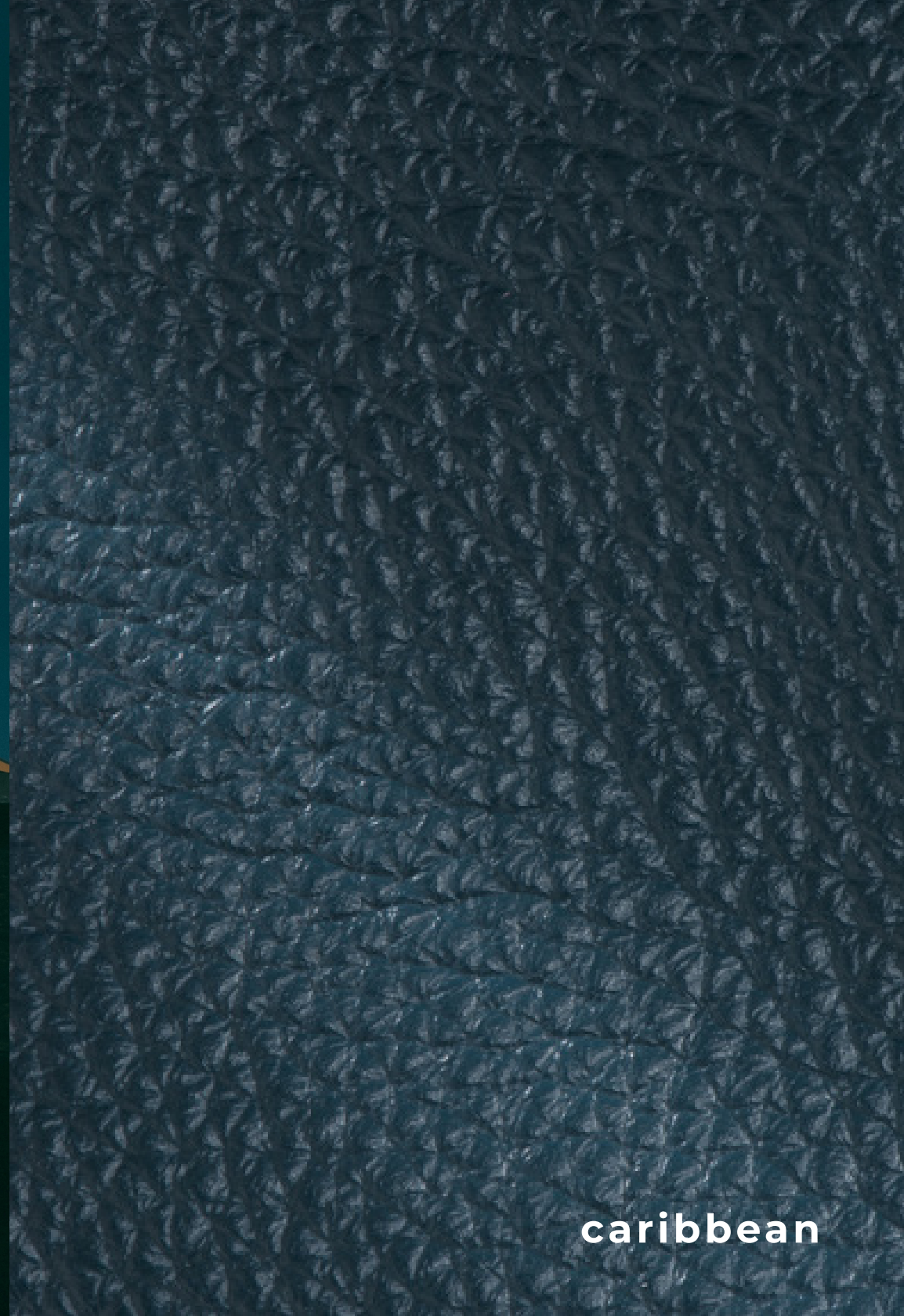
pearl



DUBLIN COLLECTION



DUBLIN COLLECTION



caribbean

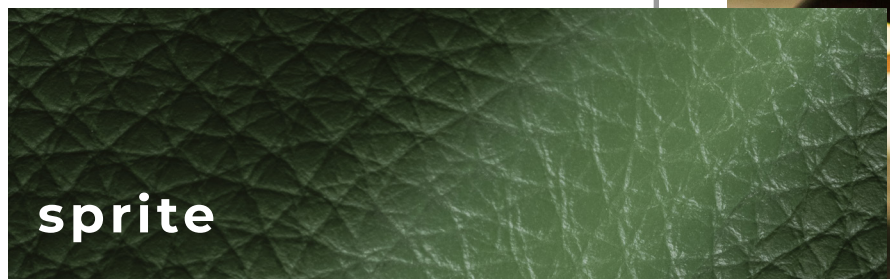




owl



scuba

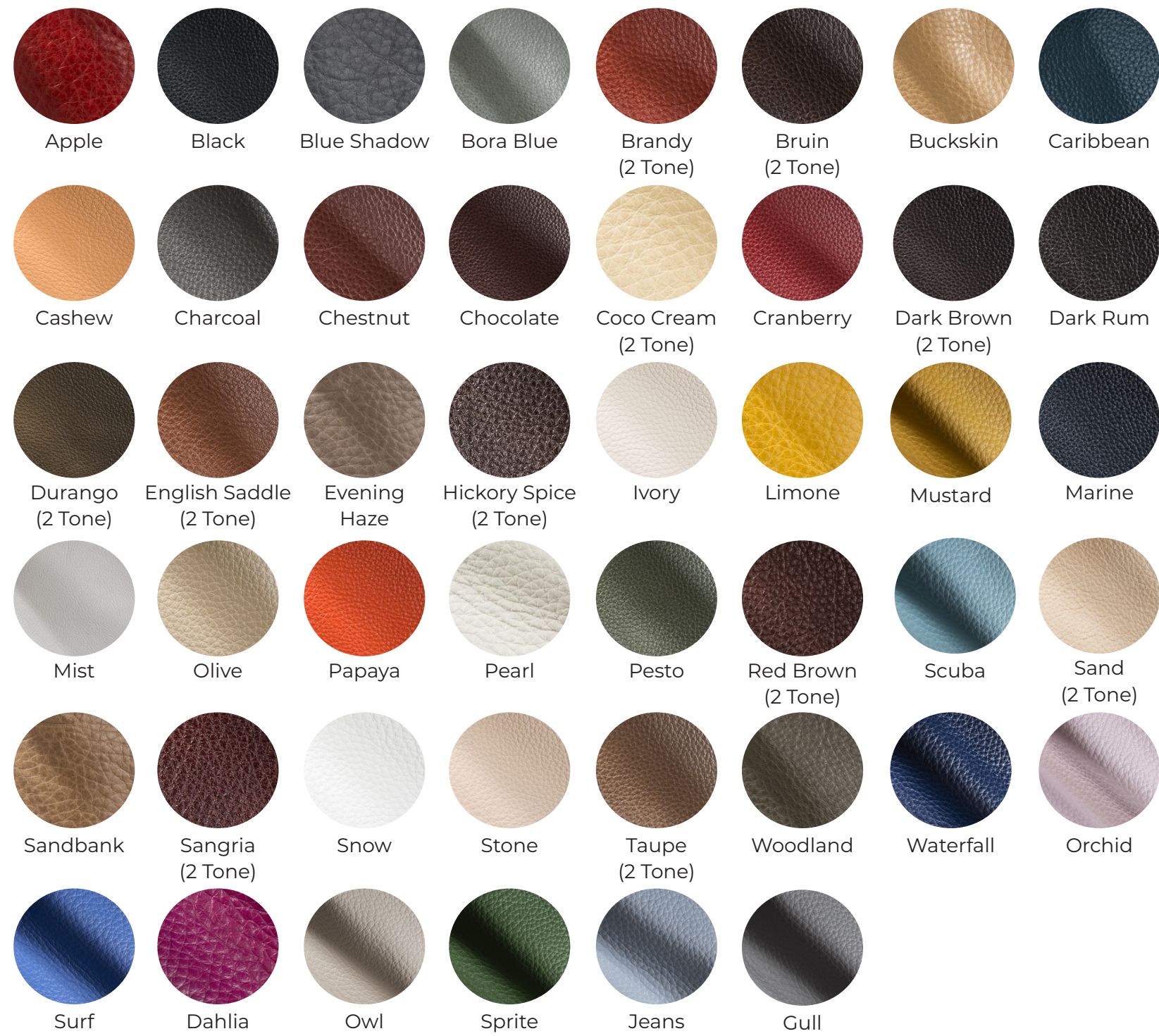


sprite



mustard





Content
Natural Print, Half Grain

Finish
Solid, Semi Matt
Finish, Dyed Through,
Pigmented

Raw Material
Extra European

Average Hide Size
50 FT2

NOTE: Due to color variations on different monitors and color printers, before making exact color and texture matches, we recommend that you request an actual sample to ensure proper color representation as many monitors and printers cannot print colors accurately. CTL Leather is not responsible for color selections made from this lookbook.