



DAKOTA

PREMIUM LEATHER

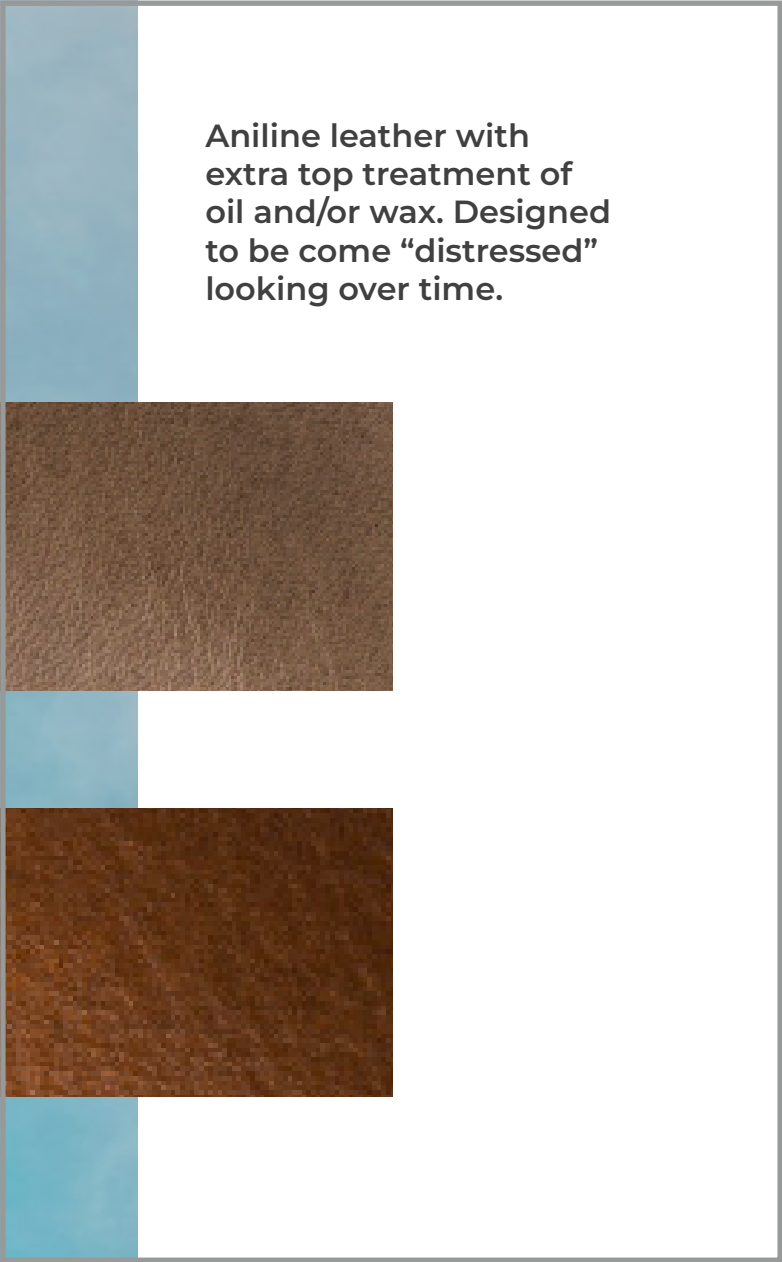
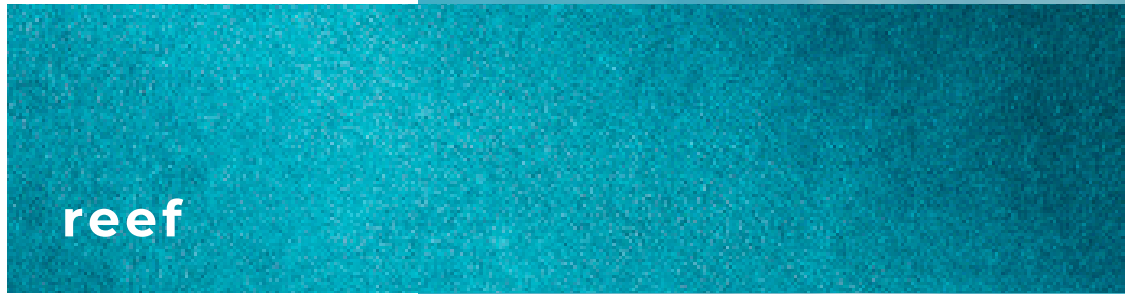
DAKOTA

PREMIUM LEATHER

B E T T E R
W I T H A G E .
M A D E T O
W I T H S T A N D .

mango



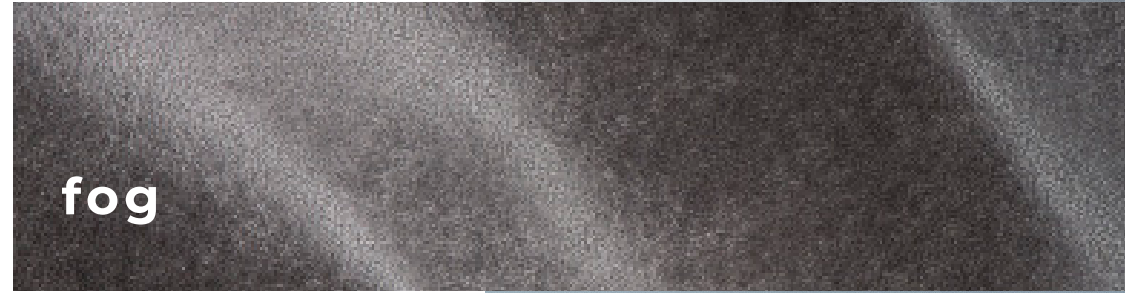




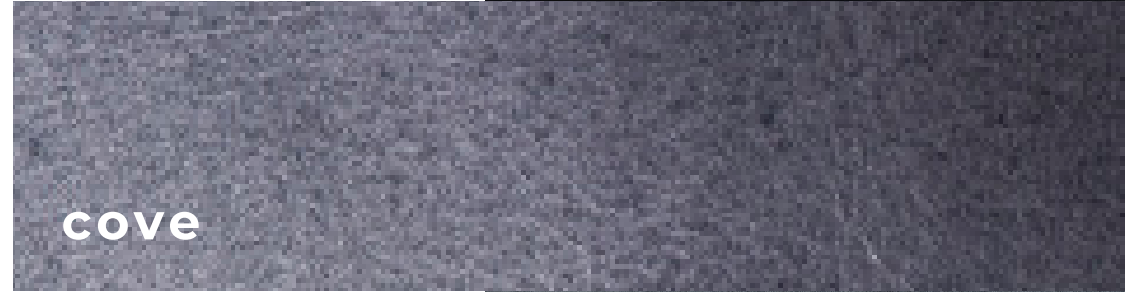
burlap



pacific blue



fog



cove

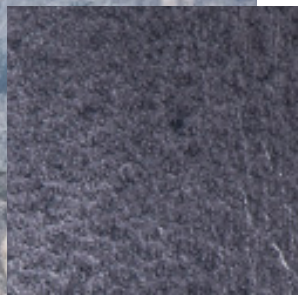
DURABLE &
SOPHISTICATED



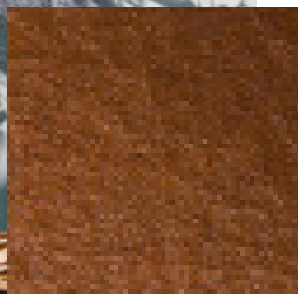
khaki



**dark
chocolate**



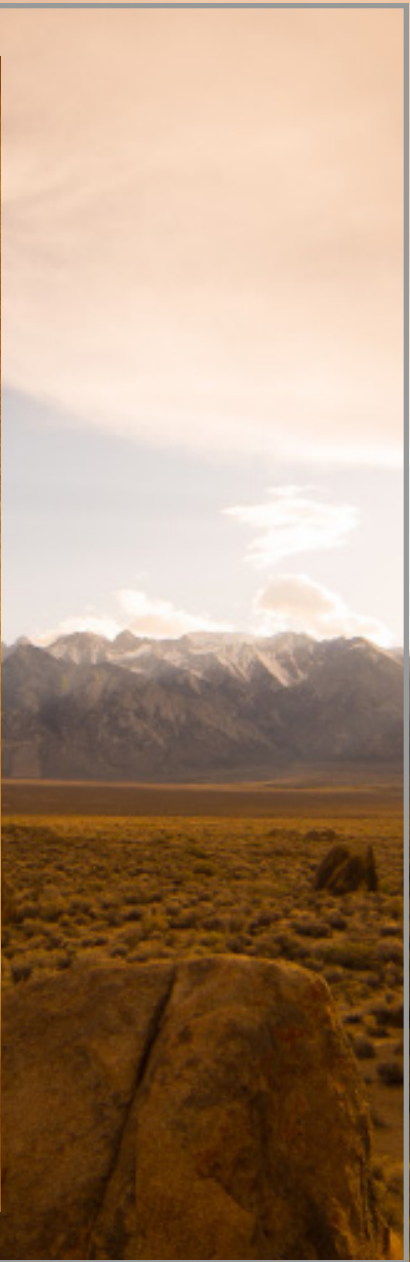
cove



**golden
brown**



marigold



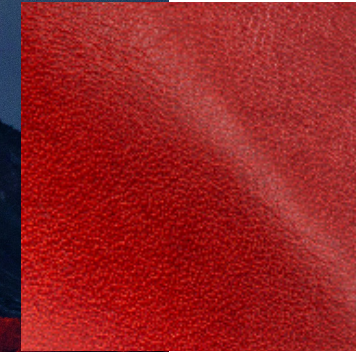
sahara



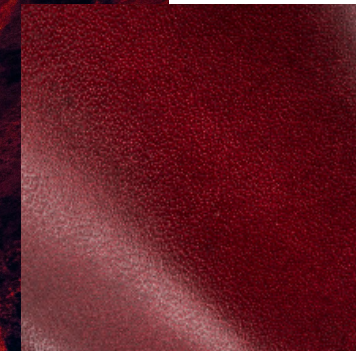
ice blue



golden brown



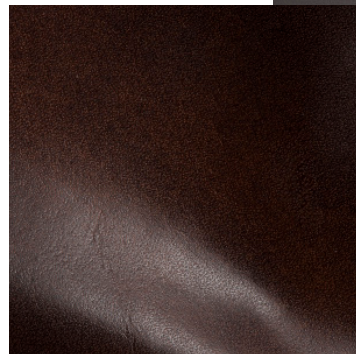
red



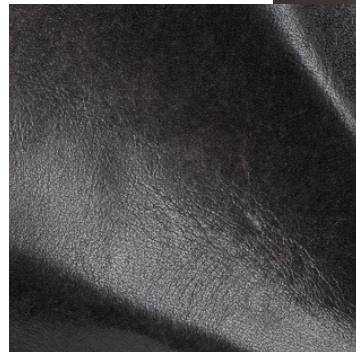
rasperry

Similar properties to anilines but will become lighter in areas of heavy use. Excellent slick surface feel, along with a light pull up that creates a two-tone effect.

nut brown



nero



DAKOTA COLLECTION

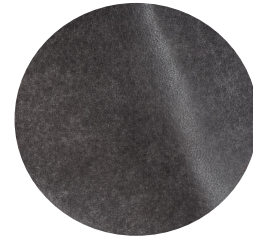




fog



Burlap



Fog



Mango



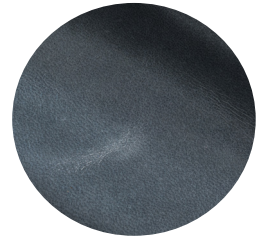
Nut Brown



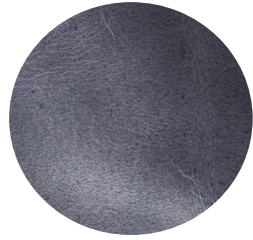
Red



Chutney



Portland Blue



Cove



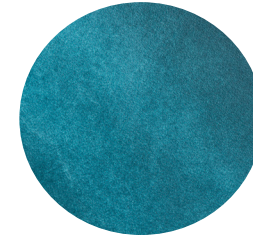
Golden Brown



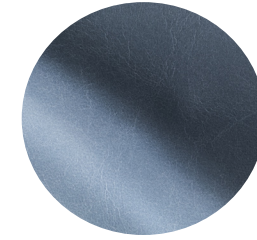
Marigold



Pacific Blue



Reef



Ice Blue



Dark Chocolate Brown



Khaki Green



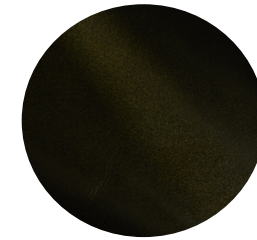
Nero



Raspberry



Sahara



Spruce

Content

Full grain/Snuffed

Finish

Aniline, Oil Pull Up

Raw Material

European

Average Hide Size

50 FT2

NOTE: Due to color variations on different monitors and color printers, before making exact color and texture matches, we recommend that you request an actual sample to ensure proper color representation as many monitors and printers cannot print colors accurately. CTL Leather is not responsible for color selections made from this lookbook.