



# *Paradiso*

**CLASSIC LEATHER**





# *Paradiso*

**CLASSIC LEATHER**



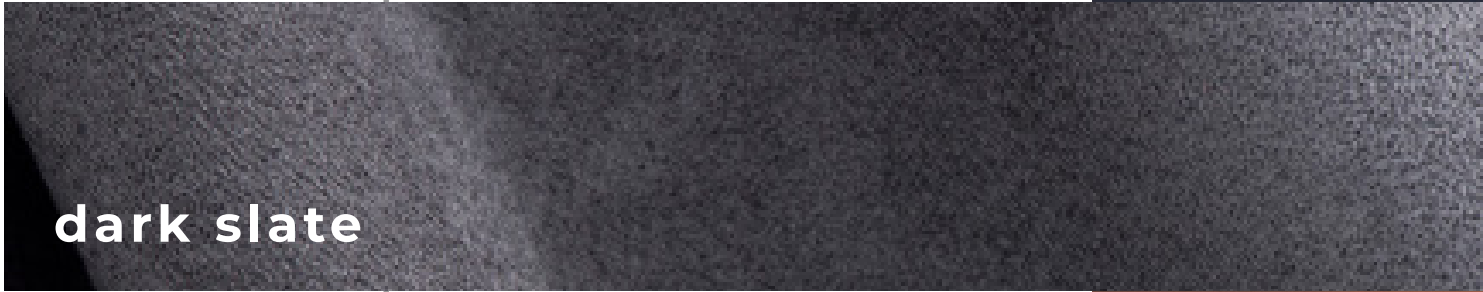
S U E D E I N  
L O O K , B U T  
W I T H O U T T H E  
C O S T A N D  
W E A T H E R  
O F S U E D E

dusty rose



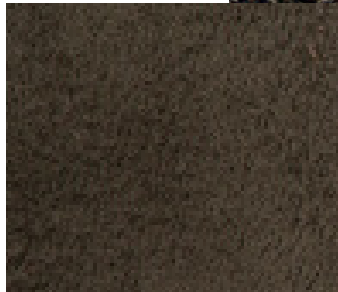


A leather bottom gives a strong pliable structure to this smart product, which is then completed with a unique topping to provide a soft warm hand.

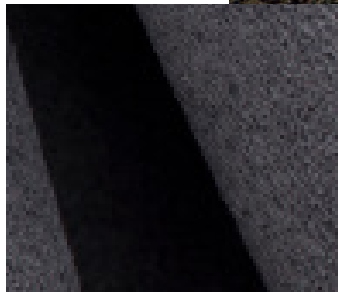




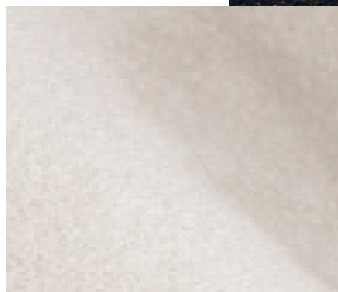
**olive night**



**dark slate**



**whisper white**



**deep teal**

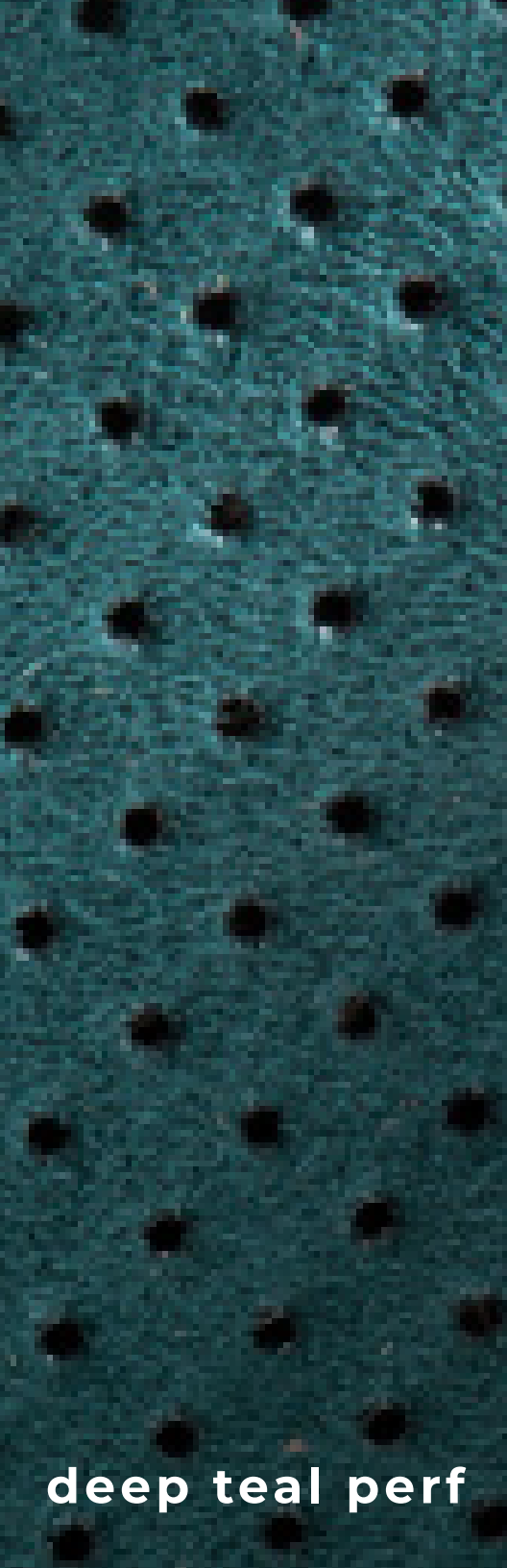


**SOFT &  
RESILIENT**

**mulch**







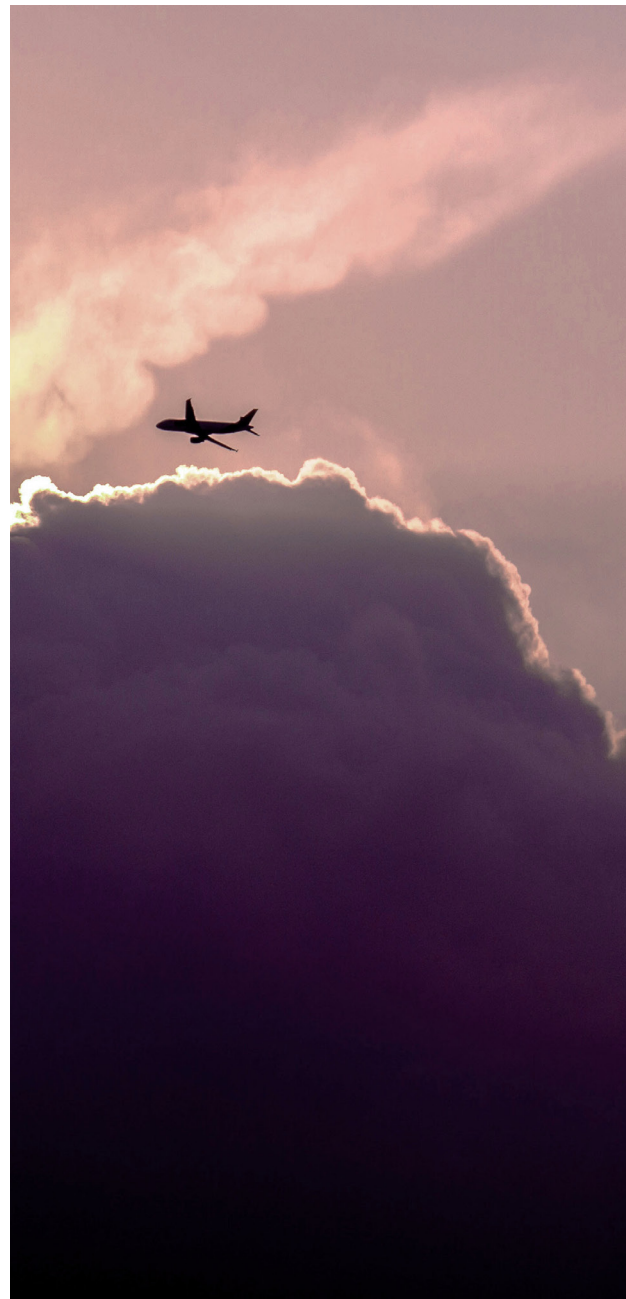
deep teal perf

autumn glaze





**Blush**



A leather structure offers the longevity and strength of leather, while the top finish provides water repellent and flame retardant features, as well as high resistance to staining and ease of cleanability.



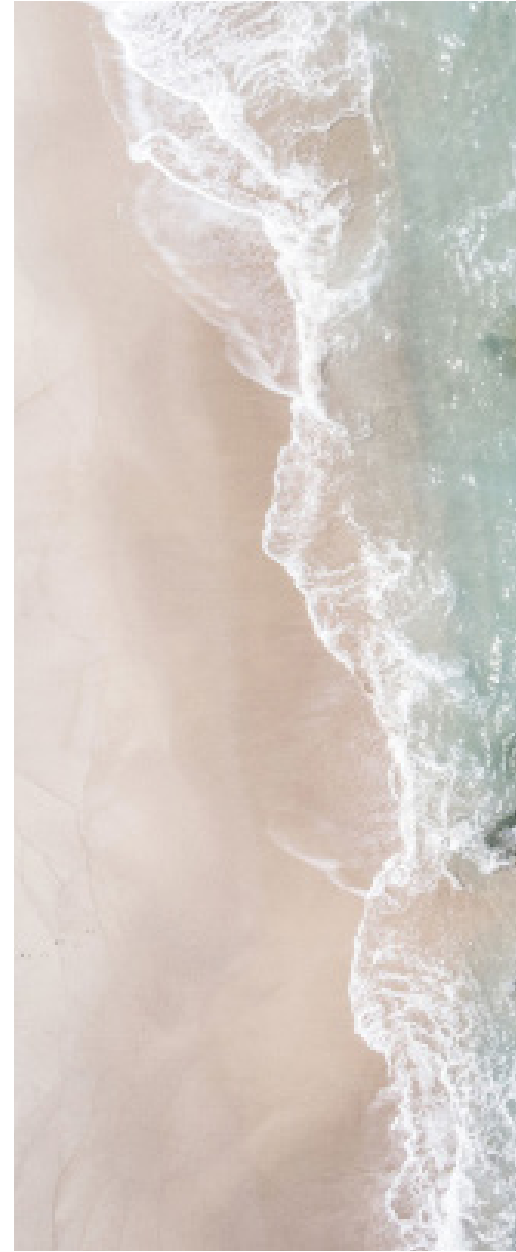
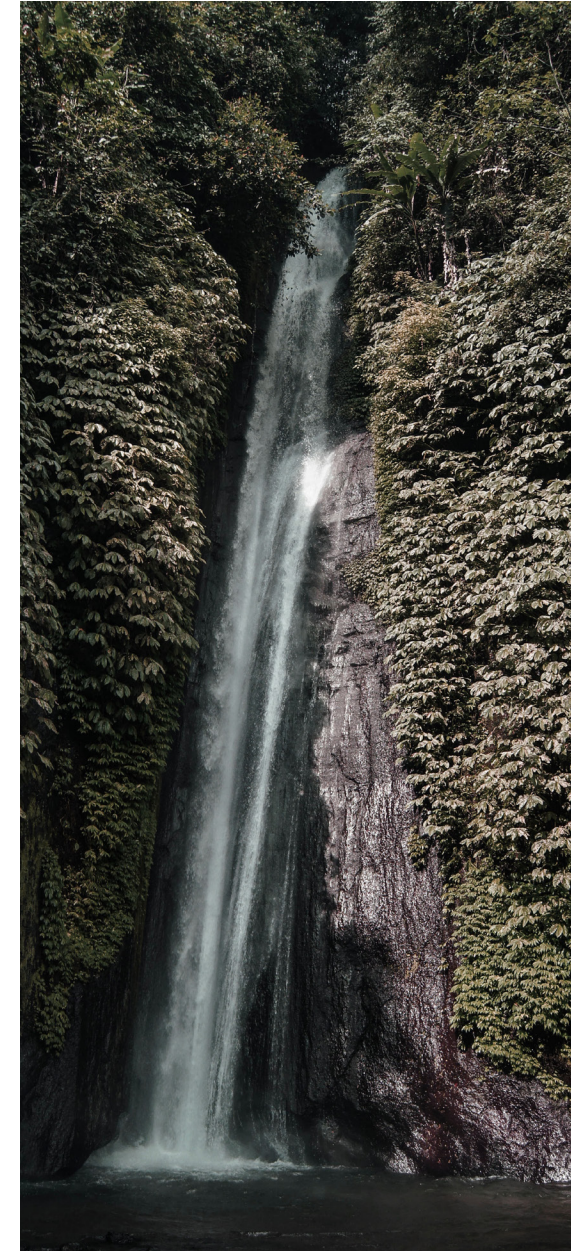
**lion**



**demitasse**



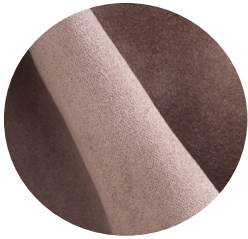
A V A I L A B L E  
I N B A S K E T  
A N D P E R F  
S T Y L E S







Autumn Glaze



Blush



Dark Slate



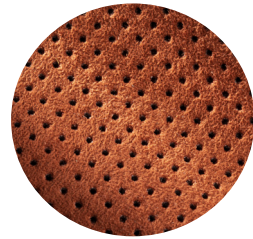
Deep Teal Basket



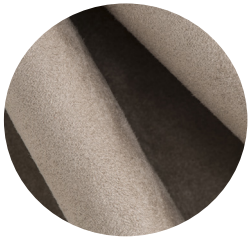
Lion



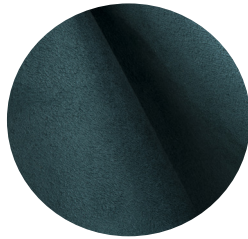
Mulch Basket



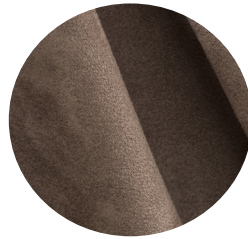
Autumn Glaze  
Perf



Chateau  
Grey



Deep Teal



Demitasse



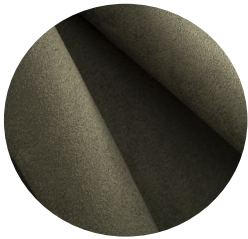
Pirate Black



Olive Night



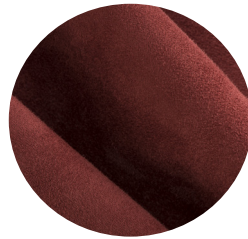
Autumn Glaze  
Basket



Clover



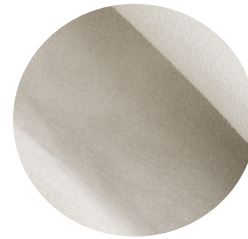
Deep Teal Perf



Dusty Rose



Mulch



Whisper White

**Content**  
Leather/Fiber

**Finish**  
Suede Finish

**Raw Material**  
European Splits

**Average Hide Size**  
25-30 FT2

*NOTE: Due to color variations on different monitors and color printers, before making exact color and texture matches, we recommend that you request an actual sample to ensure proper color representation as many monitors and printers cannot print colors accurately. CTL Leather is not responsible for color selections made from this lookbook.*