



# SEIDE

**CONTRACT & HOSPITALITY LEATHER**







SEIDE

**CONTRACT & HOSPITALITY LEATHER**





loft



cillegia

brass

brandy

woodland





# SMOOTH & FEATHERY

Pure aniline leather marked by  
its rich saturated colors, smooth  
and feathery, natural grain  
structure

terra

bruciato



**marmo**



**kaky**







kaky



terra

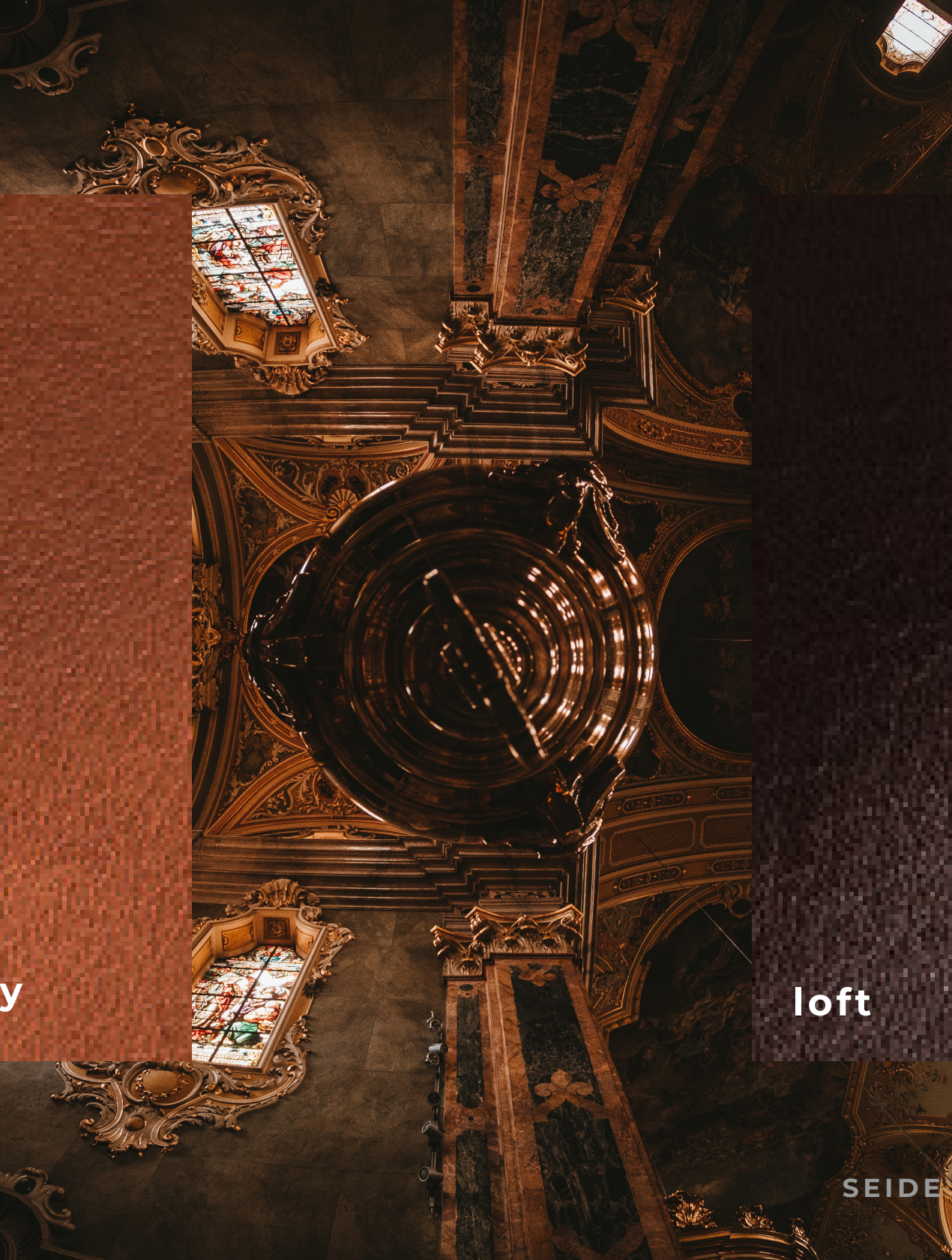
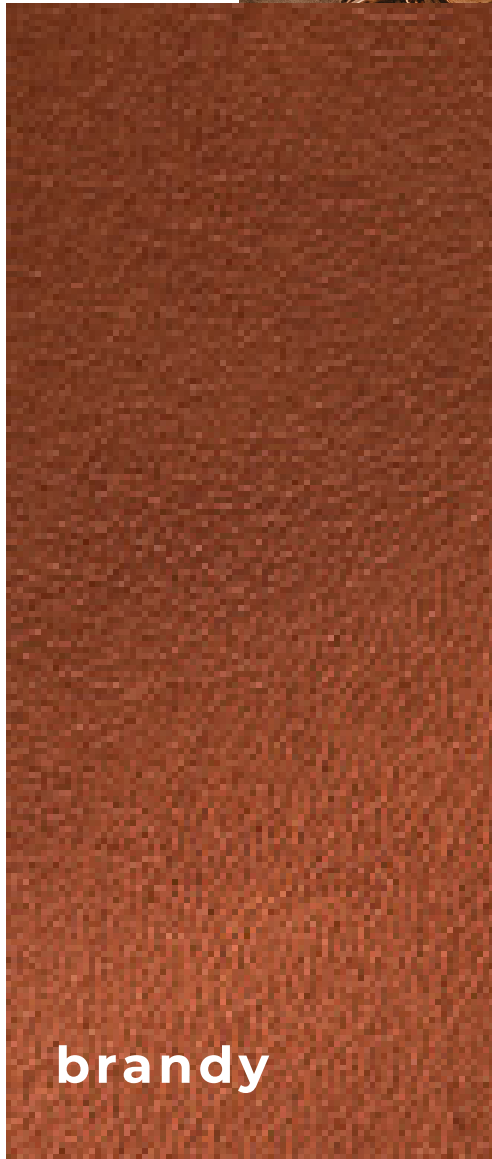




# RICH & SATURATED

Almost butter like to the touch. Seide embodies the romance of pure luxury but is not suggested for high traffic areas, but for those who appreciate sitting on pure luxury.





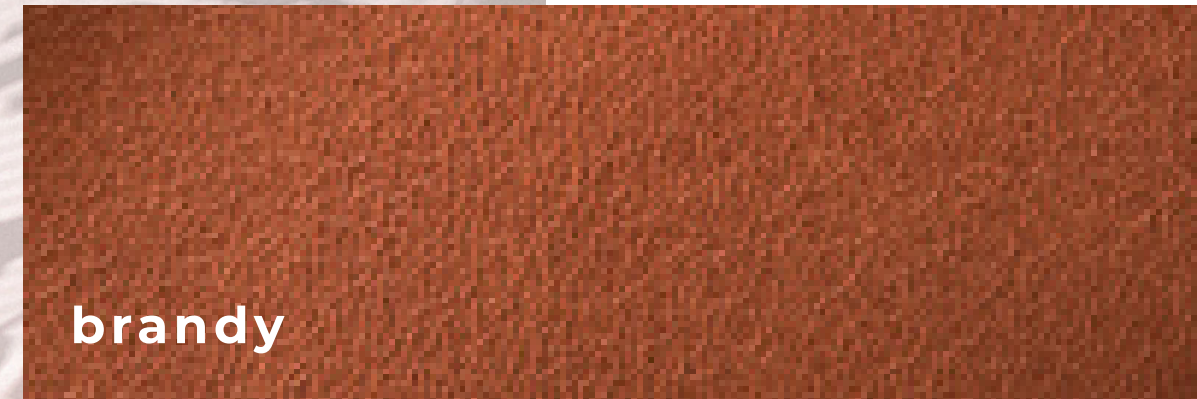


**nero**

**timber wolf**











EVERLASTING  
& LUXURIOUS

cillegia

SEIDE COLLECTION





woodland



Brass



Brandy



Bruciato



Cillegia



Kaky



Nero



Lavanda



Loft



Marmo



Seina



T.moro



Timber  
Wolf



Terra



Viola



Seal Grey



Wood Ash



Woodland



Cuio

**Content**  
Natural, Full Aniline, No  
Cover

**Finish**  
Aniline Through Dyed,  
Matt Finish, Slight Iron  
Sheen

**Raw Material**  
European

**Average Hide Size**  
50 FT2

*NOTE: Due to color variations on different monitors and color printers, before making exact color and texture matches, we recommend that you request an actual sample to ensure proper color representation as many monitors and printers cannot print colors accurately. CTL Leather is not responsible for color selections made from this lookbook.*