



CTL LEATHER
A Garrett Leather Company

CLASSICO

CONTRACT & HOSPITALITY LEATHER



CLASSICO

CONTRACT & HOSPITALITY LEATHER



arancio

green



nero



Classico is produced on prime European Raw material and reveals a smooth, natural & vibrant surface, giving this leather a classic and rich look with lasting appeal.



chestnut



rust



bianco



chestnut



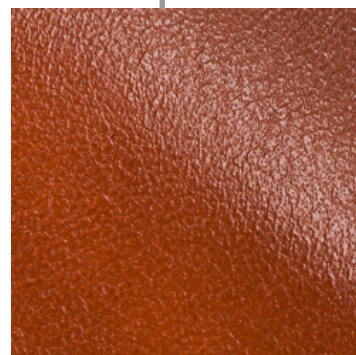
green



perla



sienna



dark brown





sand



High End leather displaying dimensions of color and light which are enhanced throughout the hide au naturel, providing subtle variations in depth to enhance this leather's visual appeal once upholstered.

A photograph of a modern building facade. The left side features a grid of glass windows with dark frames. A balcony with a glass railing and green plants is visible. The right side is a dark, textured wall. A dark grey rectangular box is centered over the glass facade, containing the text 'DURABLE & EVERLASTING' in white.

**DURABLE &
EVERLASTING**



turquoise



latte



Anthracite



Azure



Barely
Beige



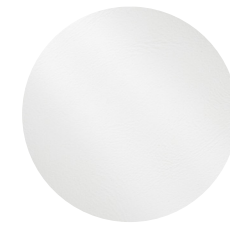
Buckhorn



Arancio



Baobab



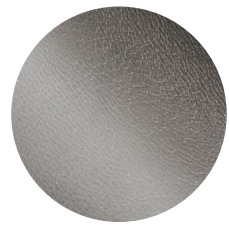
Bianco



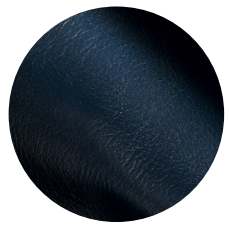
Burgundy



Chutney



Ciment



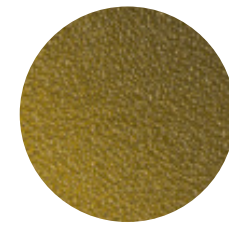
Cobalt



Cotton



Dark Brown



Green



Mogano



Nero



Cranberry



Denim



Honey



Hunter Green



Red



Rust



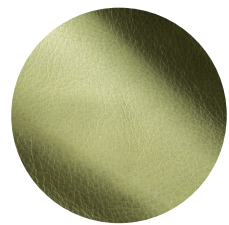
Sand



Sienna



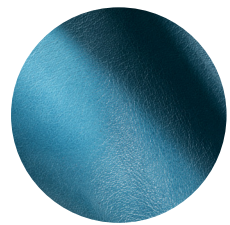
Latte



Seafoam



Stone



Turquoise



Ebano



Chestnut



Perla

Content

Top Grain, Natural Grain,
Snuffed

Finish

Aniline, Semi Matt,
Smooth

Raw Material

European

Average Hide Size

50 FT2

NOTE: Due to color variations on different monitors and color printers, before making exact color and texture matches, we recommend that you request an actual sample to ensure proper color representation as many monitors and printers cannot print colors accurately. CTL Leather is not responsible for color selections made from this lookbook.