



CTL LEATHER
A Garrett Leather Company

EPIC

VINTAGE LEATHER



EPIC

VINTAGE LEATHER

S O F T A N D
L U X U R I O U S T O
T H E T O U C H

iguana green

Experience color, texture
and design in this new
suede leather.

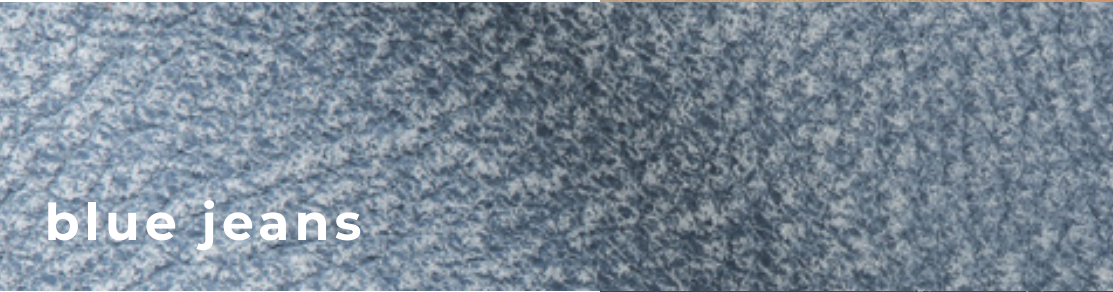
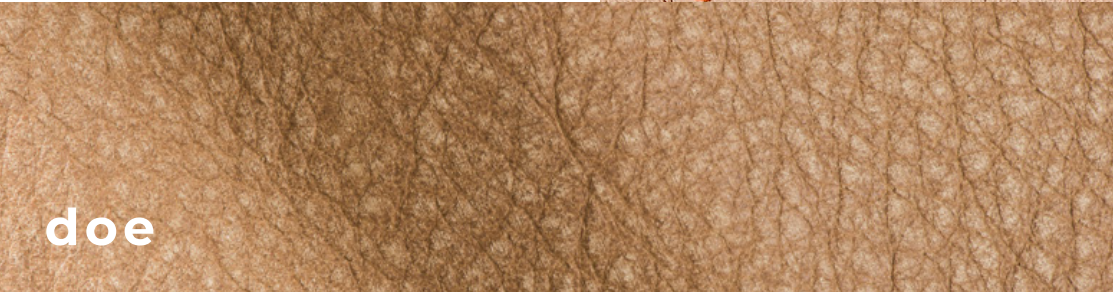




SOPHISTICATION & ELEGANCE

Thick and pliable, soft and luxurious to the touch, the new Epic collection is a warm, natural grained leather with a vintage effect available in a bright, energetic color palette; and appealing to all markets and designs.

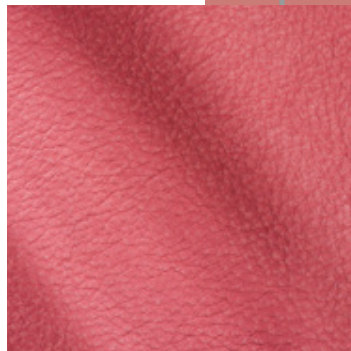
A very soft, full grain leather, Epic is a pure aniline leather with a matching bottom. It is finished with waxes and kneaded with a special manual treatment to liven up the surface and provide its signature velvet touch.



beaujolais



lipstick



The velvety hand and lavish effect of this leather exudes sophistication and elegance.

EPIC COLLECTION

mole

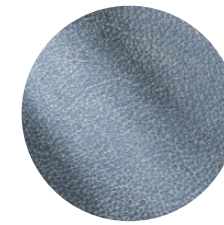


LODGE COLLECTION

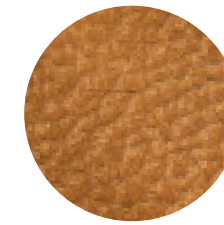
lion



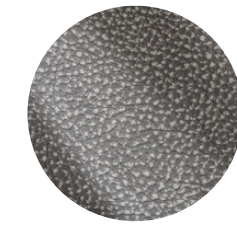
Beaujolais



Blue Jeans



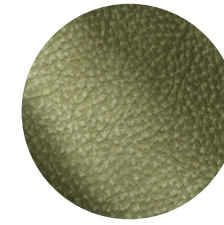
Caramello



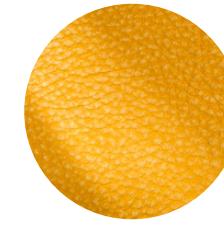
Dawn



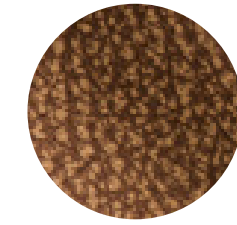
Doe



Iguana Green



Inca Gold



Lion



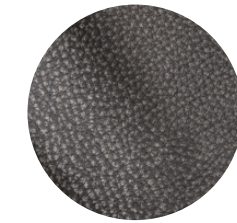
Lipstick



Mole



Pebble



Shark

Content
Full Grain, Semi-Aniline

Finish
Natural Grain, Vintage Look

Raw Material
Asian

Average Hide Size
45 FT2

NOTE: Due to color variations on different monitors and color printers, before making exact color and texture matches, we recommend that you request an actual sample to ensure proper color representation as many monitors and printers cannot print colors accurately. CTL Leather is not responsible for color selections made from this lookbook.



PROPERTIES

Property	Test Method	Result
Average Thickness	ISO 2589	0.9 - 1.1mm
Elongation at Break	ISO 3376	Traction > 12N/mmsq.
Tear Strength	ISO 3377-2	> 50 N/mm
Flexing Endurance	ISO 5402	No Visible Cracking
Colour Fastness to Artificial Light (Xenotest 72 Hrs.)	ISO 105 B 02	4/5 (Grey Scale)
Colour Fastness to Rubbing (50 Dry Rubs, 20 Wet Rubs)	ISO 11640 , ISO 11640	Dry 50 Cycles ; Wet 20 Cycles
Finishing Adhesion	ISO 11644	> 50 N/cm
California Technical Bulletin 117	Cal Tech Bulletin 11v7	Pass
Cigarette Ignition Resistance	UFAC/NFPA 260	Class 2
Boston Fire Dept	BFD IX-I	Pass
Wyzenbeek - (Oscillatory Cylinder Method) @ 36,000 cycles	ASTM D 4157.10	Pass