



CTL LEATHER

A Garrett Leather Company

MUSTANG

VINTAGE LEATHER



MUSTANG

VINTAGE LEATHER

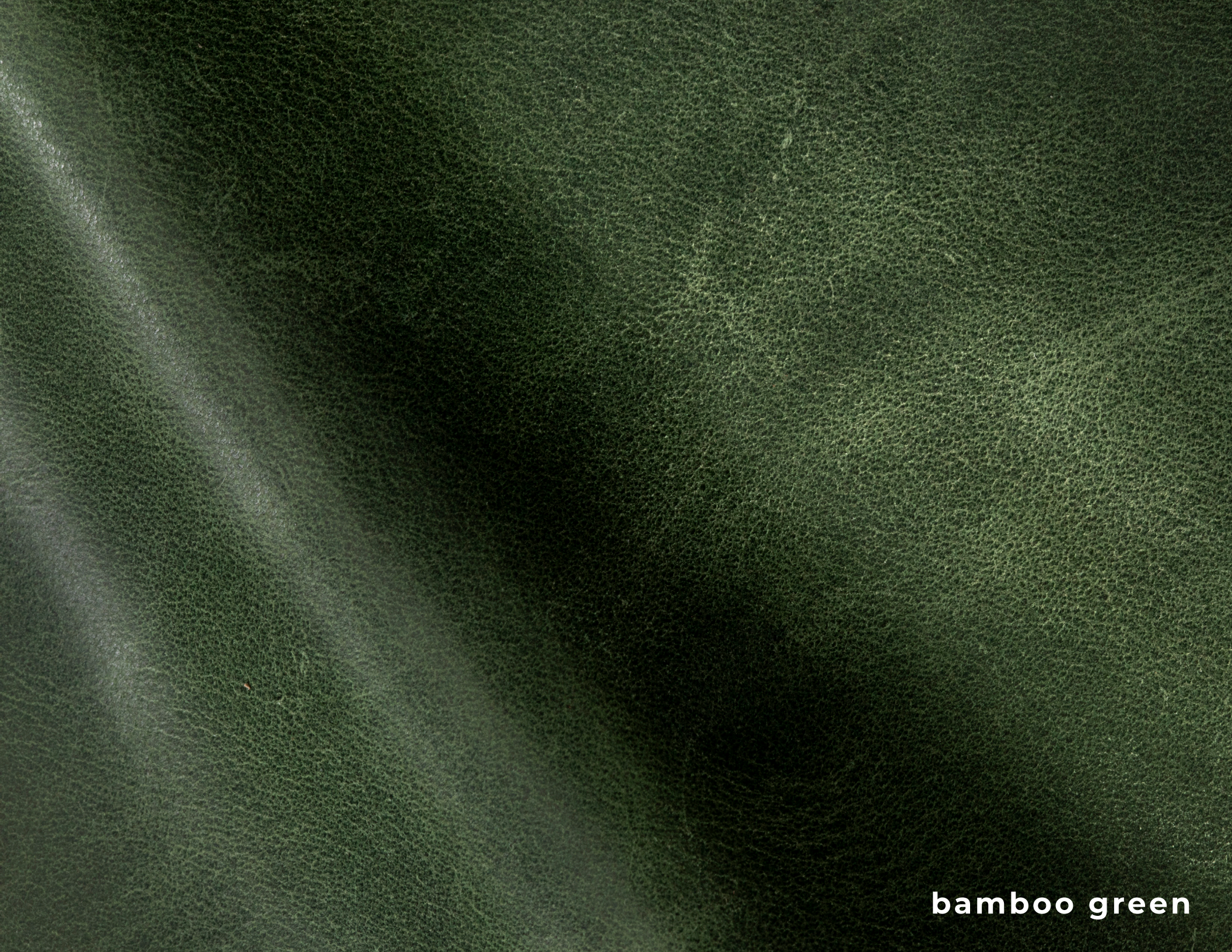


liver chestnut

flaxen chestnut

Inspired by the riches of the earth, this full-bodied leather has a soft wax finish that exudes sophisticated elegance.

biscuit



Available in an exquisite palette of cool neutrals and rich earth tones, this is a classic leather that will upholster beautifully and develop a rich patina with time and with age.

dapple
grey



seal
brown



russett

SOPHISTICATION & ELEGANCE

Crafted from the finest selection of European hides, the leather is milled ever so gently to offer a subtle break that highlights the natural tones in its smooth matt finish that will be enhanced over time.

grey
ghost

mustang
red



red roan



sandy bay

sand dollar



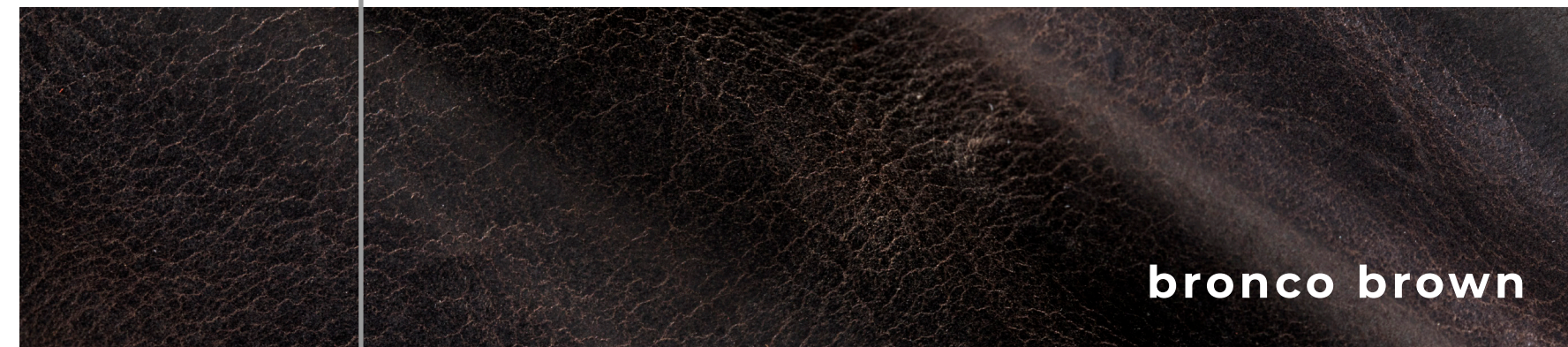
Durable with a dense structure
and intense depth, it is ideal for
the perfect handbag to a truly
classic club chair.

storm



MUSTANG COLLECTION

racing red



bronco brown



sand dollar

T I M E L E S S

L O O K A N D

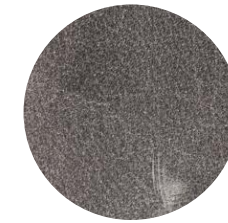
F E E L

night shadow

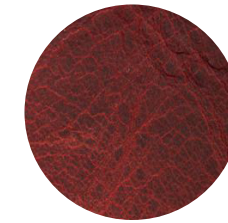
sable



Biscuit



Grey
Ghost



Racing
Red



Sable



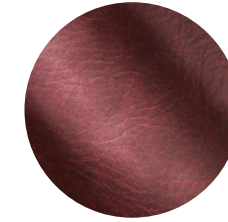
Bamboo Green



Dapple Grey



Liver
Chestnut



Red Dun



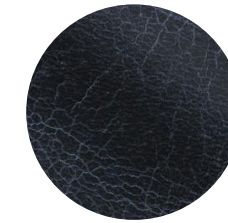
Seal Brown



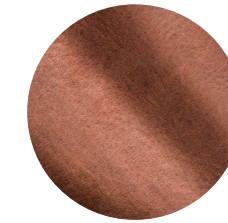
Sandy Bay



Flaxen
Chestnut



Night
Shadow



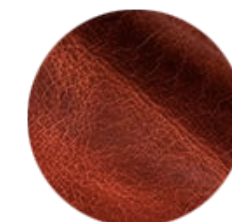
Russet



Storm



Red Roan



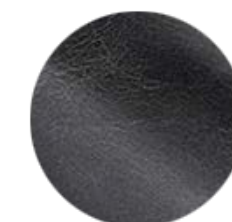
Blazing
Flame



Bronco
Brown



Sand Dollar



Silver Cloud

Content
Full Grain, Aniline

Finish
Solid, Wax Pull Up

Raw Material
European

Average Hide Size
50 FT2

NOTE: Due to color variations on different monitors and color printers, before making exact color and texture matches, we recommend that you request an actual sample to ensure proper color representation as many monitors and printers cannot print colors accurately. CTL Leather is not responsible for color selections made from this lookbook.