



CTL LEATHER
A Garrett Leather Company

PRESTON

CONTRACT & HOSPITALITY LEATHER

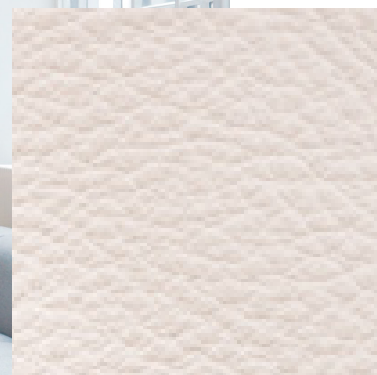


PRESTON

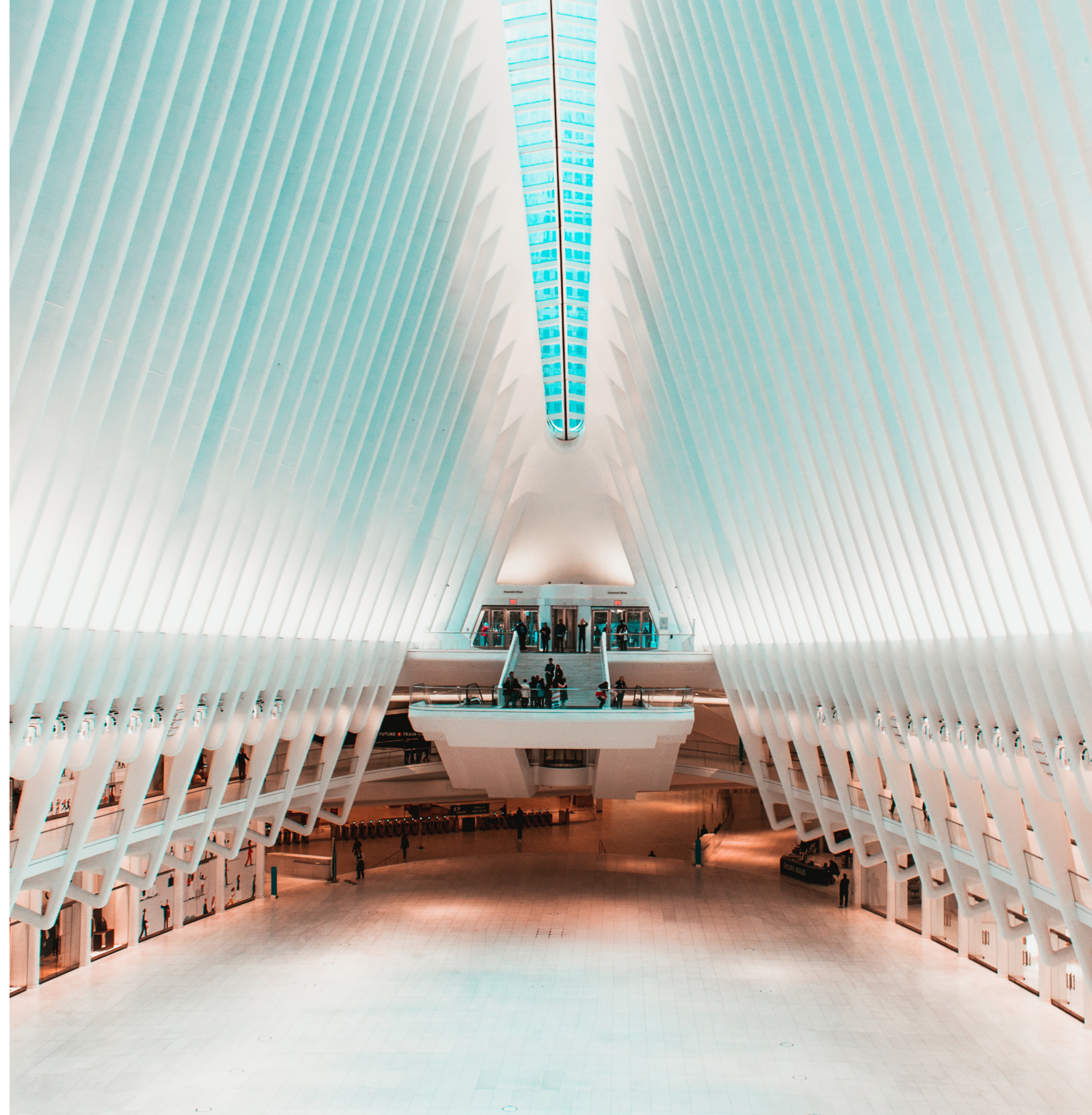
CONTRACT & HOSPITALITY LEATHER



**crushed
ice**



marble



blu petrol

polinesia



Natural raised grain, a soft sense of elegance, and with a slight waxy touch, Preston is available to choose in 105 colours today!

ebony

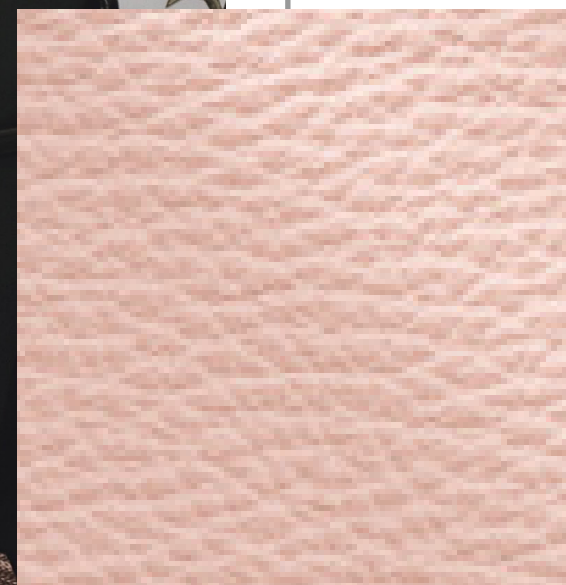


lichen

antilop



cedar green



pill



Designed with the demands
of today's modern lifestyle
recognizing colour and
durability in mind.

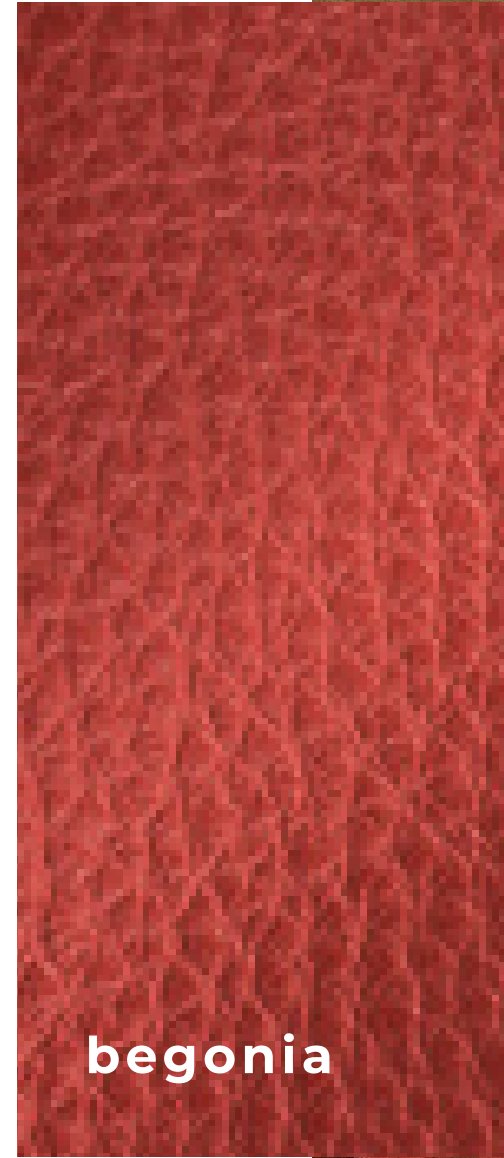
turquiose

north pole

This leathers performance in
high traffic areas ensures ease of
cleaning.



PRESTON COLLECTION



begonia



sunset



ivory



energy



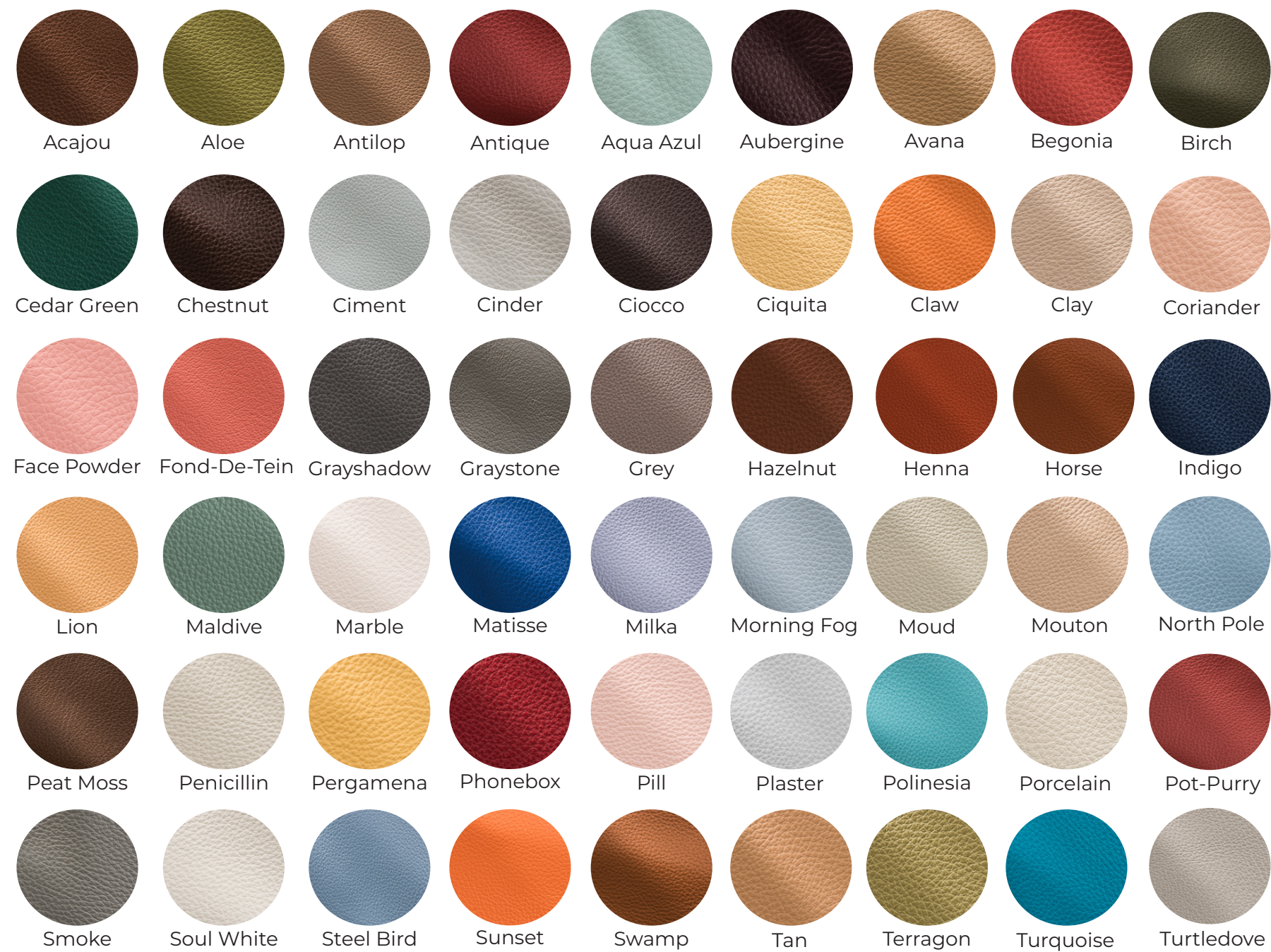
aqua azul



TIMELESS & DYNAMIC

A timeless look, available in an
extensive range of dynamic and
endless colours.

lime



Content
Natural Print, Half Grain

Finish
Solid, Semi Matt
Finish, Dyed Through,
Pigmented

Raw Material
Extra European

Average Hide Size
50 FT2

NOTE: Due to color variations on different monitors and color printers, before making exact color and texture matches, we recommend that you request an actual sample to ensure proper color representation as many monitors and printers cannot print colors accurately. CTL Leather is not responsible for color selections made from this lookbook.