



CTL LEATHER

A Garrett Leather Company

STAGECOACH

PRESTIGE LEATHER



STAGECOACH

PRESTIGE LEATHER



hickory



red rocks



rawhide





UNIQUE
& TIMELESS

midnight
blue

stonewash



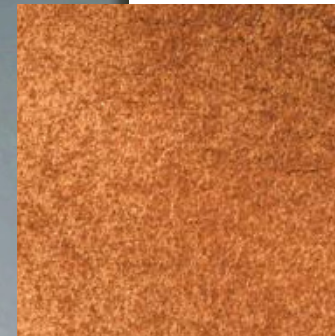
bark



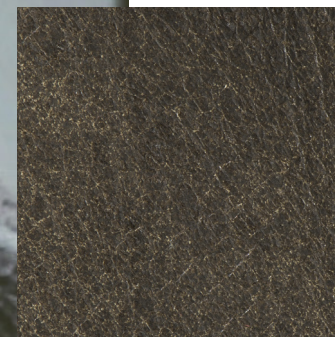
branch



timber



hickory

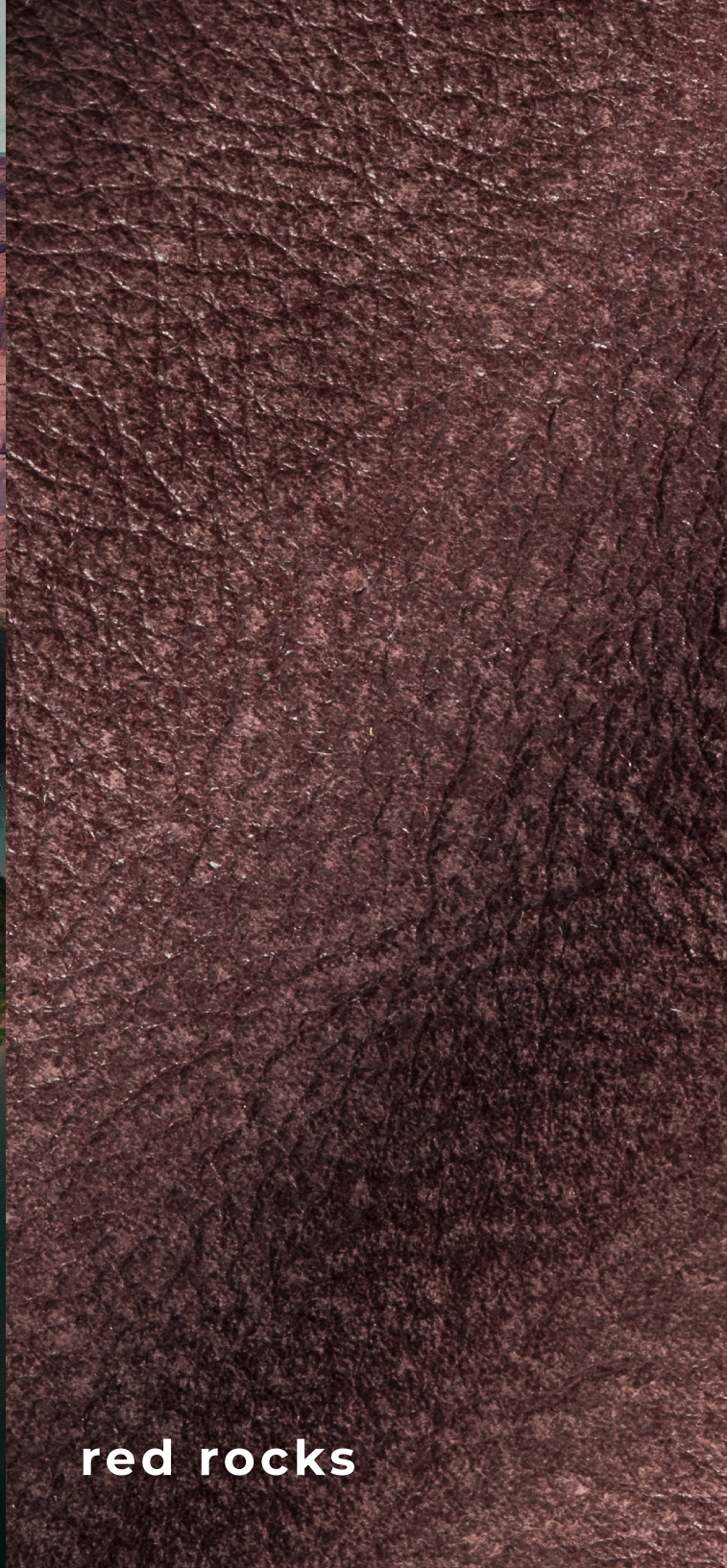


black moss

Produced on European hides, Stagecoach is a natural grain leather that has been aniline dyed and hand buffed to achieve the unique vintage look.

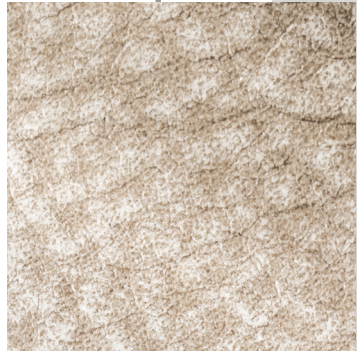


red rocks



timber

stonewash



birch



Ideal for club chairs and a rustic
look without compromising a
very soft and natural hand.

rawhide



STAGECOACH COLLECTION



**DURABLE &
EVERLASTING**

STAGECOACH COLLECTION

branch



Bark



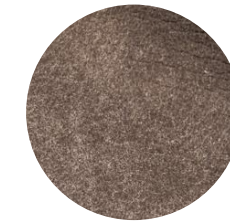
Birch



Black Moss



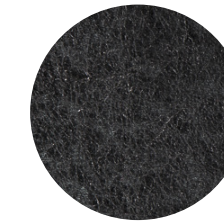
Branch



Fossil



Hickory



Midnight
Blue



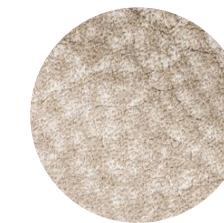
Moonstone



Rawhide



Red Rocks



Stonewash



Timber

Content

Top Grain, Natural Grain,
Snuffed

Finish

Aniline, Semi Matt,
Smooth

Raw Material

European

Average Hide Size

50 FT2

NOTE: Due to color variations on different monitors and color printers, before making exact color and texture matches, we recommend that you request an actual sample to ensure proper color representation as many monitors and printers cannot print colors accurately. CTL Leather is not responsible for color selections made from this lookbook.