



CTL LEATHER
A Garrett Leather Company

Caress

PREMIUM LEATHER



Caress

PREMIUM COLLECTION



CULTIVATED
AGED LEATHERS

desert

Sophisticated natural oil pull up leather, rich and infused colors. Caress's unique finishing classifies it as a more natural version of a patent leather.

CARESS COLLECTION



mulberry

The background image is a photograph of a sunlit courtyard. It features several tall, light-colored classical columns. In the foreground, there are two large potted plants with dense green foliage. The ground is paved with light-colored tiles, and shadows from the columns and plants are cast across it. A metal fence is visible in the background, and trees are seen beyond it. Two rectangular color swatches are overlaid on the left side of the image. The top swatch is a dark, textured brown with the word 'dusk' in white. The bottom swatch is a lighter, textured brown with the word 'bronze' in white.

dusk

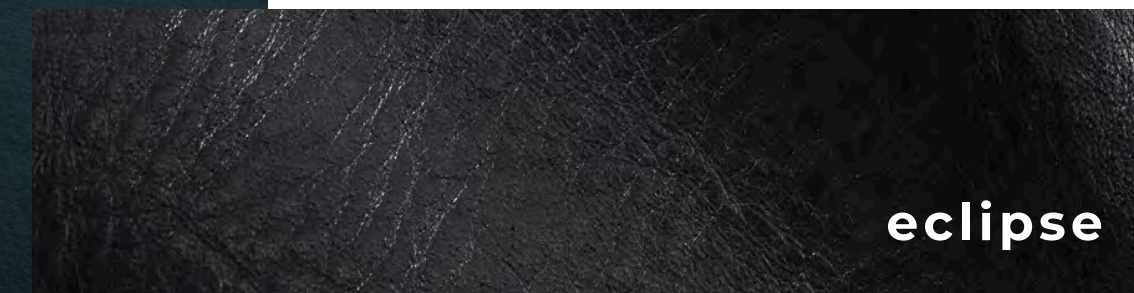
bronze



Matt in finish with a firm, strong character upon upholstery, Caress can add structure to any look and imparts a tailored appearance in any environment or style, modern or traditional.



mykonos blu



eclipse

CARESS COLLECTION

cafe



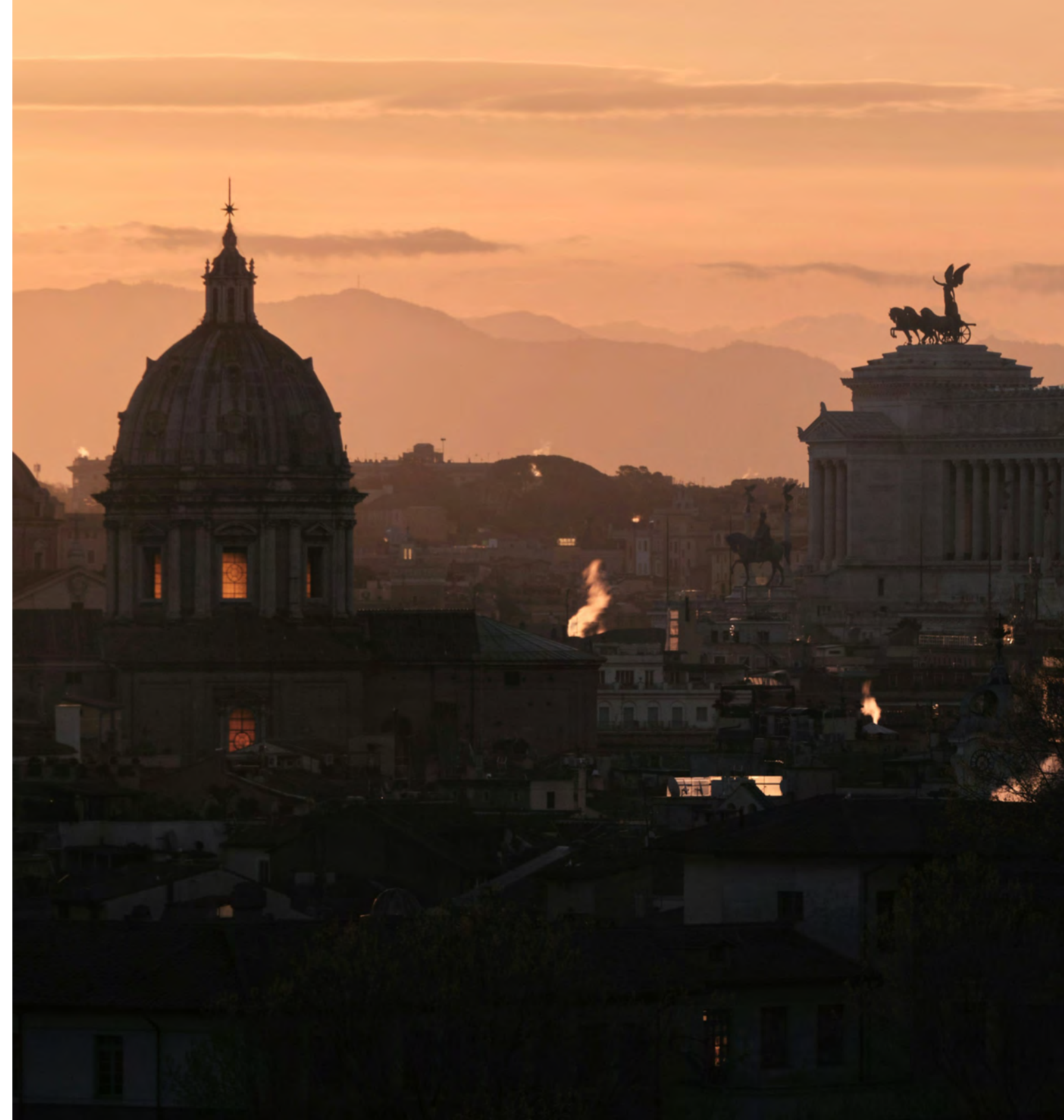
cinnamon



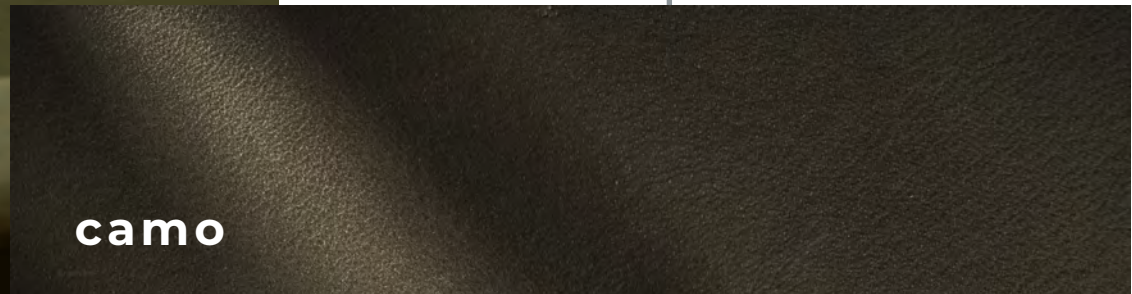
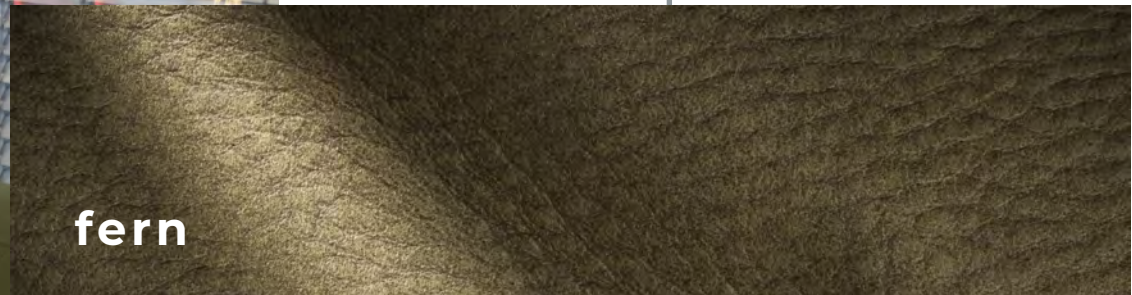


malibu

regatta



flame



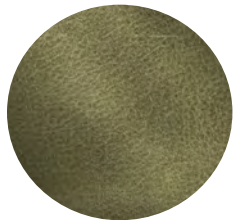
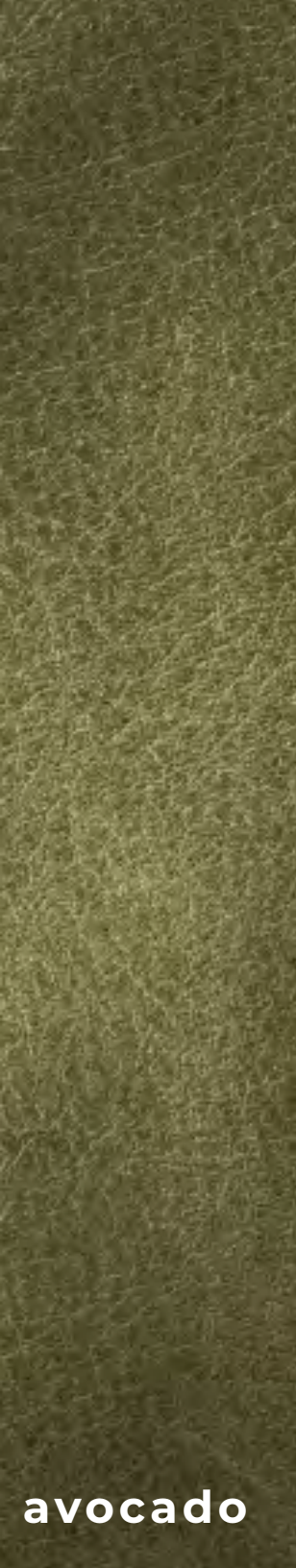
caramel



bordeaux



NATURAL &
SOPHISTICATED



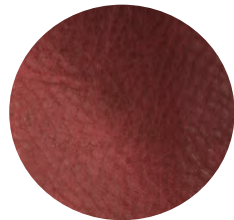
Avocado



Cafe



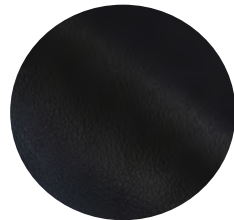
Desert



Mulberry



Autumn Maple



Regatta



Bordeaux



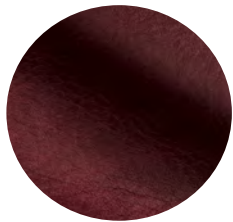
Caramel



Dusk



Mykonos
Blu



Oxblood



Bronze



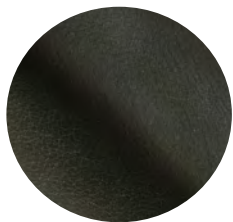
Cinnamon



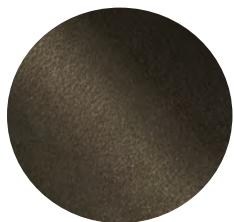
Eclipse



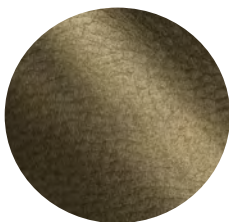
Woodland Grey



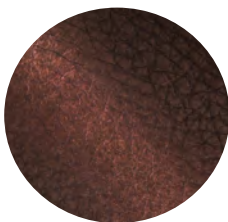
Eden Green



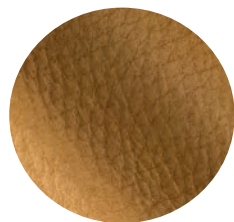
Camo



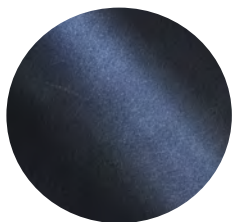
Fern



Flame



Maize



Malibu

-
- Content**
Solid, Oil Pull Up
- Finish**
Aniline, Oil Pull Up
- Raw Material**
European
- Average Hide Size**
50 FT2 (4.65m2)
- Country of Orgin**
Italy
- Clean**
Soft Cleaner
- Protect**
Protection Cream
- Hide Type**
Bovine
- Configuration**
Whole Hide
- Grain**
Full
- Rejuvenate**
Oleosa

NOTE: Due to color variations on different monitors and color printers, before making exact color and texture matches, we recommend that you request an actual sample to ensure proper color representation as many monitors and printers cannot print colors accurately. CTL Leather is not responsible for color selections made from this lookbook.





Property	Test Method	Result
Average Thickness	ISO 2589	1.3 - 1.5mm
Tensile Strength	ISO 3376	> 10 N/mm to > 12 N/mm
Elongation at Break	ISO 3376	40 - 70 %
Tear Strength	ISO 3377	-1 30 - 40 N
Flexing Endurance (after 20,000 flex)	ISO 5402	? 20,000 Flex
Color Fastness to Artificial Light (Xenotest 72hrs)	ISO 105 B 02	≥ 2 (Blue Scale)
Colour Fastness to Rubbing (500 Dry Rubs, 100 Wet Rubs)	ISO 11640, ISO 11640	> 3 (Grey Scale), > 3 Grey Scale
Ignitability BS 5852-1 (Cigarette)	BS 5852:1 EN 1021:1	Pass
Ignitability BS 5852-2 (Match)	BS 5852:2 EN 1021:2	Pass
California Technical	Cal Tech Bulletin 117	Class 1
Cigarette Ignition Resistance	UFAC/NFPA 260	Class 1
Boston Fire Dept	BFD IX-I	Pass
Wyzenbeek - (Oscillatory Cylinder Method) @ 30,000 cycles	ASTM D 4157.07	Pass
Ignitability BS 5852-5 (Wooden Crib)	BS 5852-5	Treatable