



CTL LEATHER
A Garrett Leather Company

DAKOTA

PREMIUM LEATHER

DAKOTA

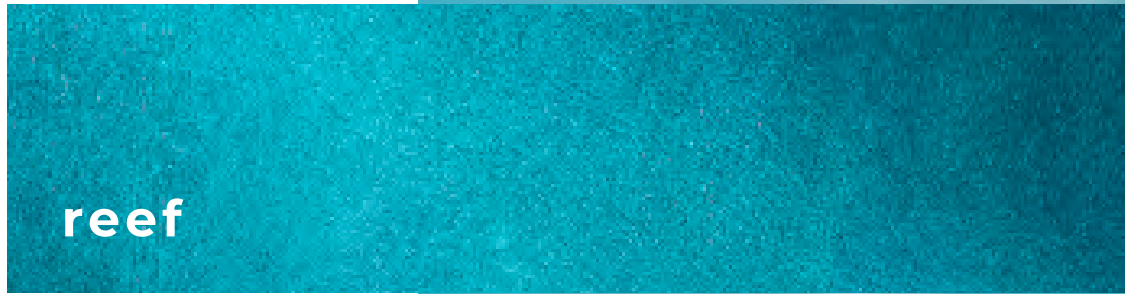
PREMIUM LEATHER

B E T T E R
W I T H A G E .
M A D E T O
W I T H S T A N D .

mango



DAKOTA COLLECTION



Aniline leather with extra top treatment of oil and/or wax. Designed to be come “distressed” looking over time.





burlap

DAKOTA COLLECTION



pacific blue



fog



cove

**DURABLE &
SOPHISTICATED**



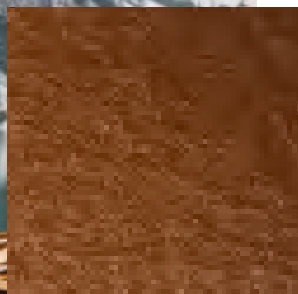
khaki



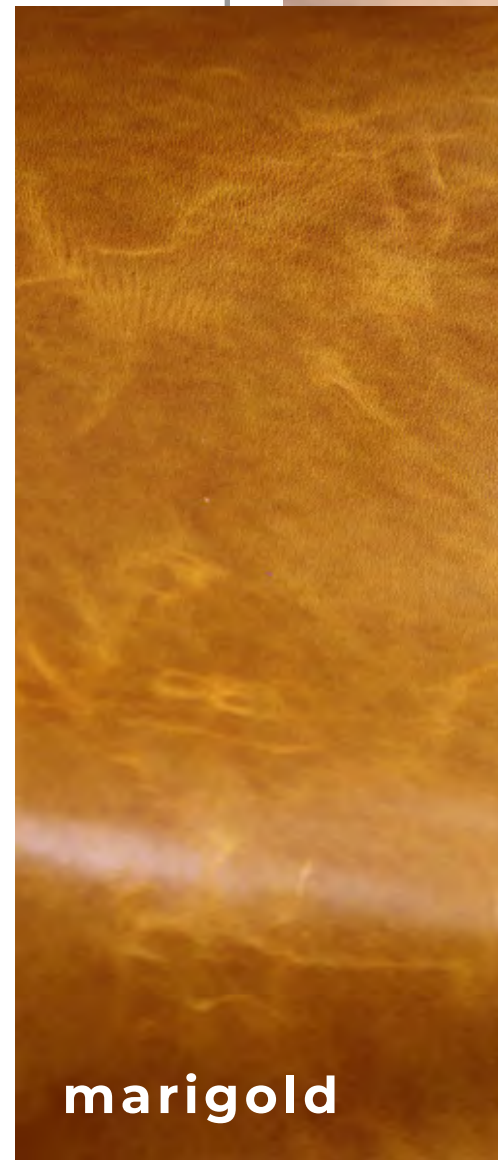
**dark
chocolate**



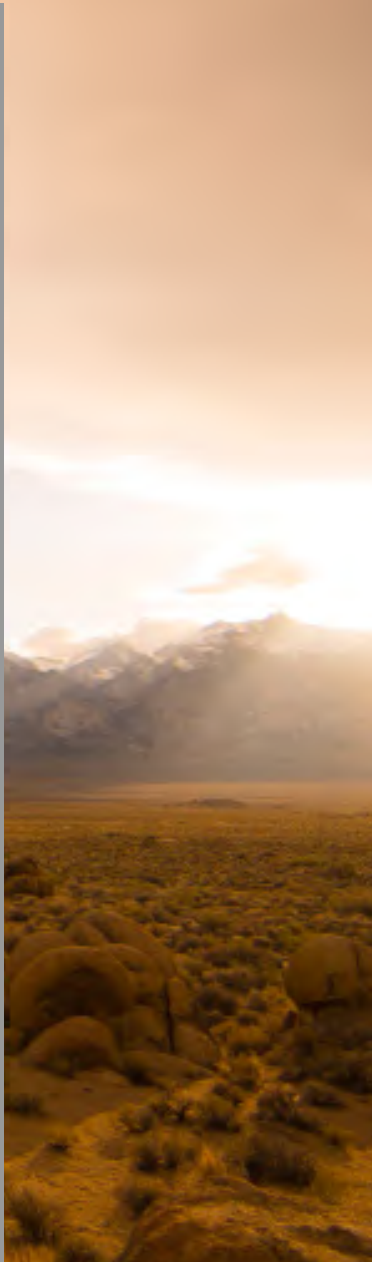
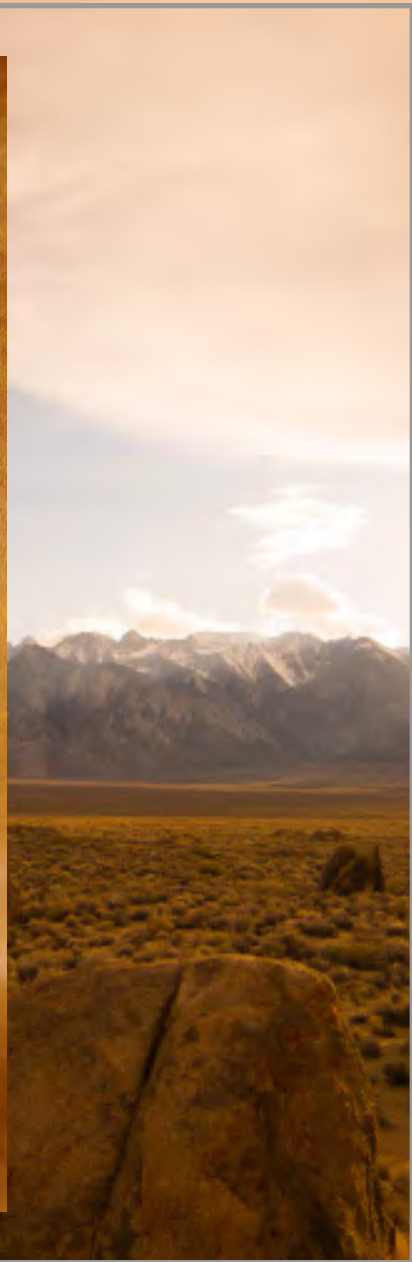
cove



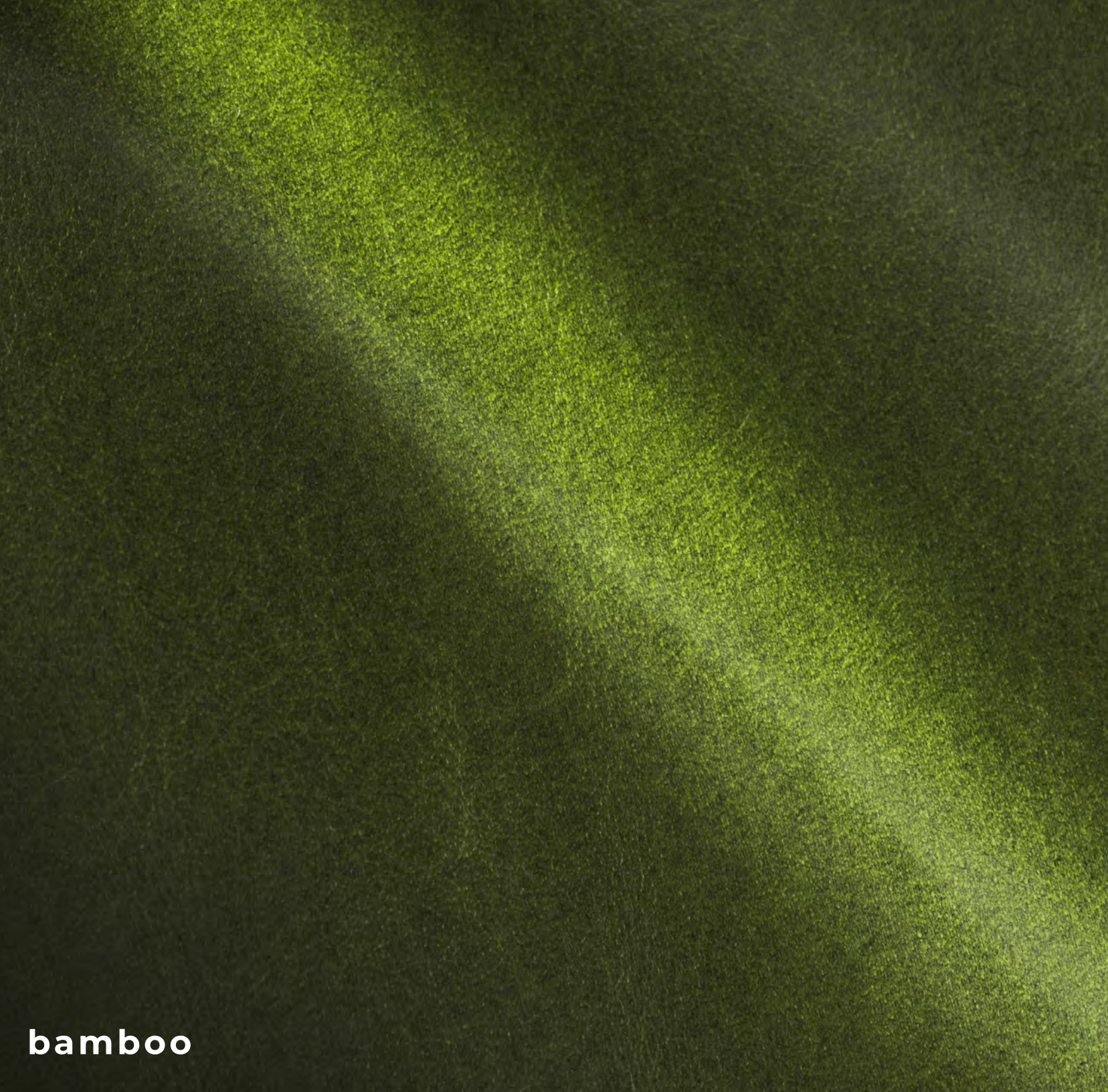
**golden
brown**



marigold

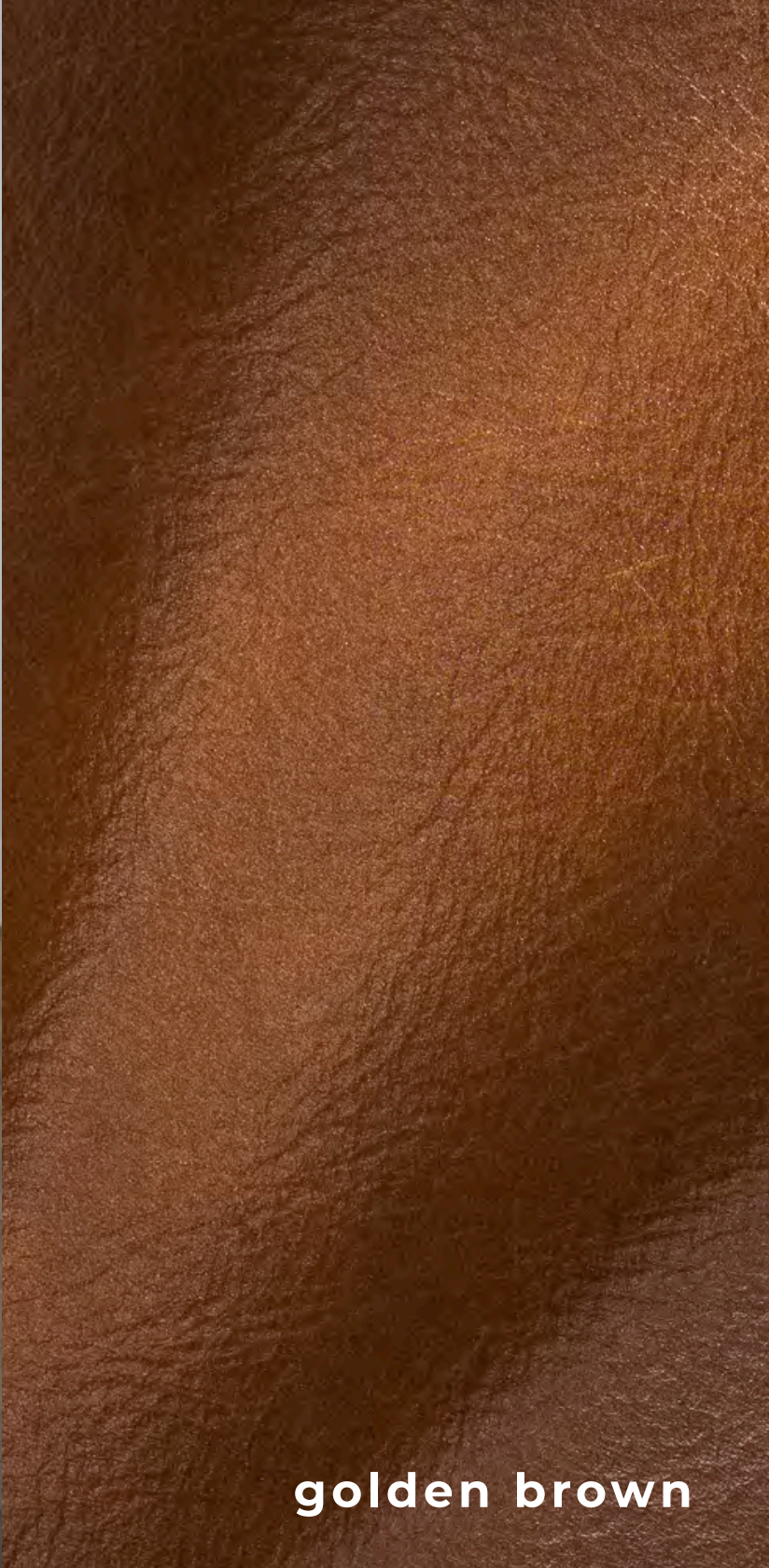


sahara

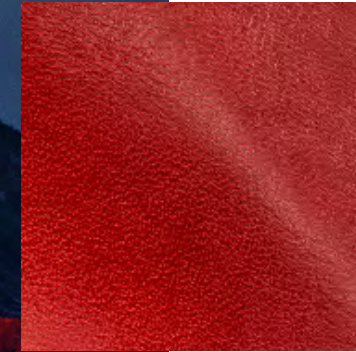




ice blue



golden brown



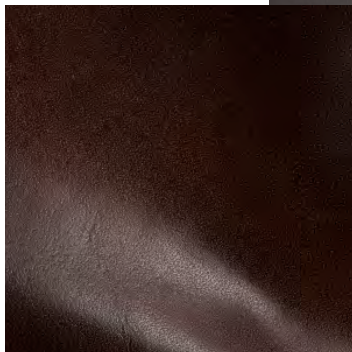
red



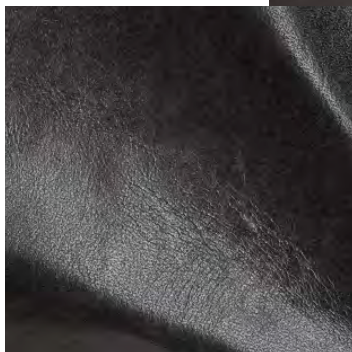
rasperry

Similar properties to anilines but will become lighter in areas of heavy use. Excellent slick surface feel, along with a light pull up that creates a two-tone effect.

nut brown



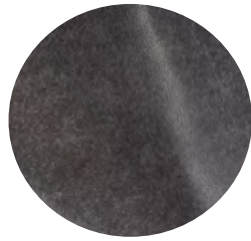
nero



DAKOTA COLLECTION



Burlap



Fog



Mango



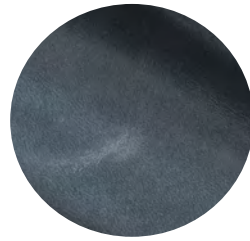
Nut Brown



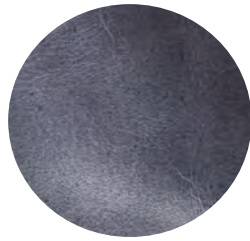
Red



Chutney



Portland Blue



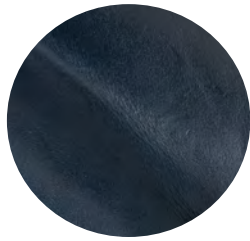
Cove



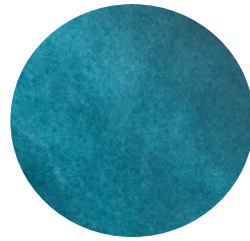
Golden Brown



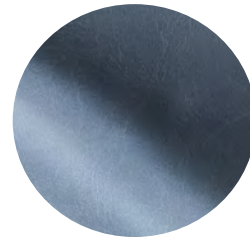
Marigold



Pacific Blue



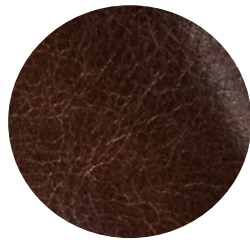
Reef



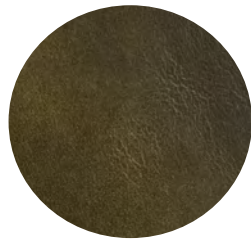
Ice Blue



Bamboo



Dark Chocolate Brown



Khaki Green



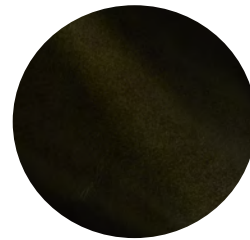
Nero



Raspberry



Sahara



Spruce

Content
Full grain/Snuffed

Finish
Aniline, Oil Pull Up

Raw Material
European

Average Hide Size
50 FT2

NOTE: Due to color variations on different monitors and color printers, before making exact color and texture matches, we recommend that you request an actual sample to ensure proper color representation as many monitors and printers cannot print colors accurately. CTL Leather is not responsible for color selections made from this lookbook.